

**MANUFACTURING PRODUCTION, AUSTRALIA
MARCH 1996**

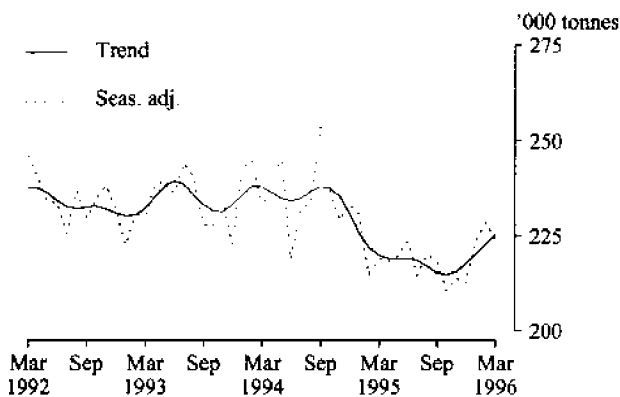
NOTES

This publication presents monthly and quarterly estimates of selected major indicators of manufacturing production for Australia. There are two graphs shown below for each manufactured commodity. The left hand graph shows seasonally adjusted (where available) and trend estimates over the last four years. The right hand graph presents a short term sensitivity analysis of the trend estimates. The sensitivity analysis shows the current trend and two possible scenarios of how the trend might move if the next seasonally adjusted estimate rises or falls by the historical average monthly or quarterly movement for that series. Because of continuing unavailability of data due to confidentiality restrictions, the graphs for M24. Paper have been removed from this issue. Also, in this issue, large revisions have been applied to the series M3. Cheese.

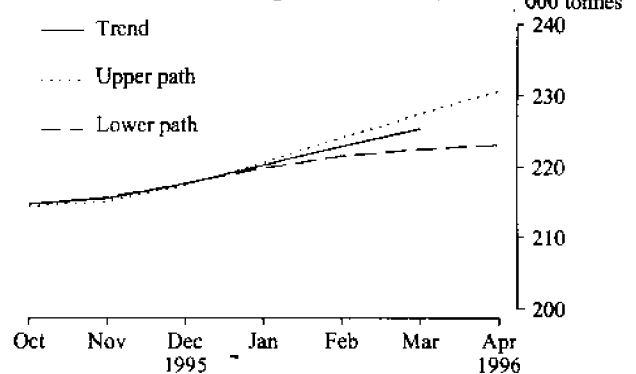
**W. McLennan
Australian Statistician**

PRODUCTION STATISTICS, AUSTRALIA: LONGER TERM TRENDS(a) AND SHORT TERM SENSITIVITY ANALYSIS

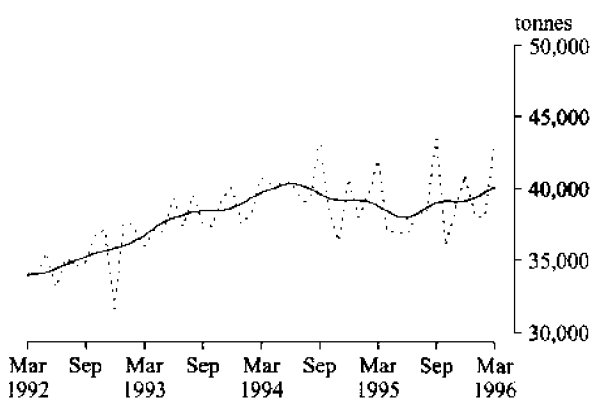
M1. RED MEAT



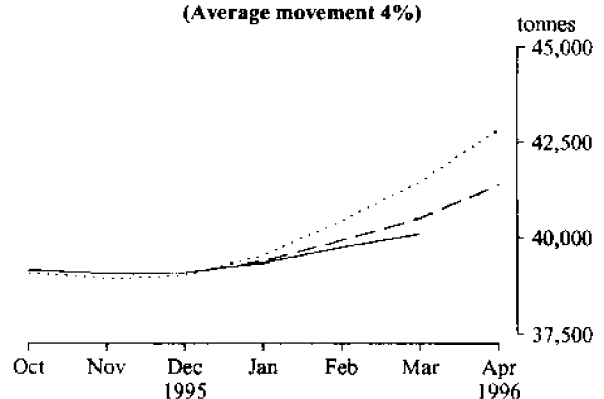
**M1. RED MEAT
(Average movement 4%)**



M2. CHICKEN MEAT



**M2. CHICKEN MEAT
(Average movement 4%)**

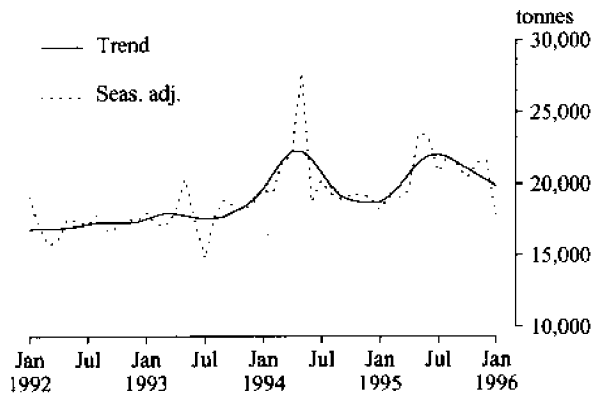


For footnotes see end of tables.

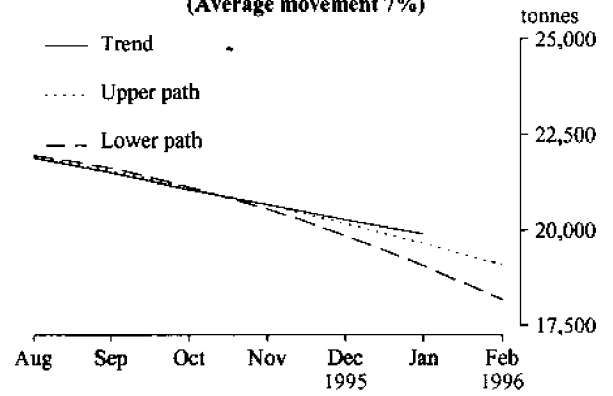
INQUIRIES

- for further information about statistics in this publication and the availability of related unpublished statistics, contact Jeffrey Middleton on Sydney (02) 268 4541.
- for information about other ABS statistics and services please refer to the back page of this publication.

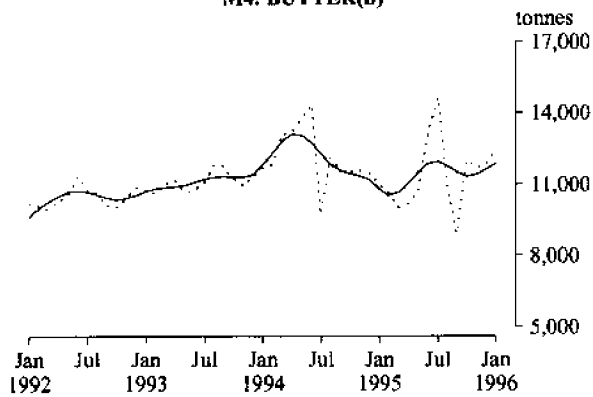
M3. CHEESE(b)



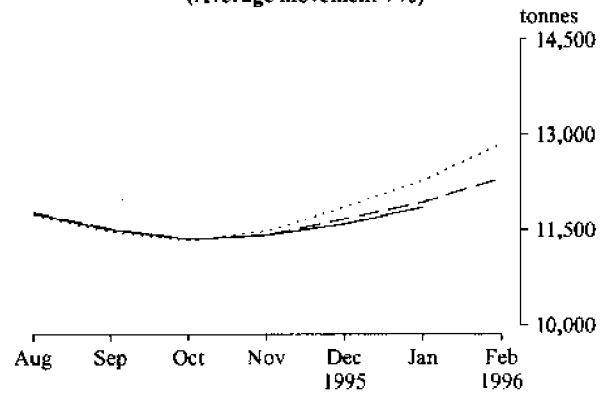
M3. CHEESE(b)
(Average movement 7%)



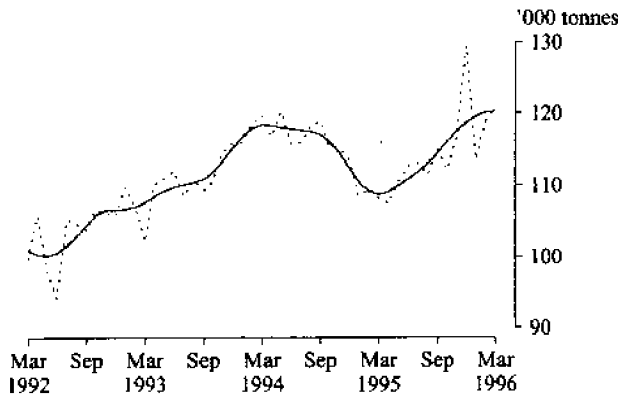
M4. BUTTER(b)



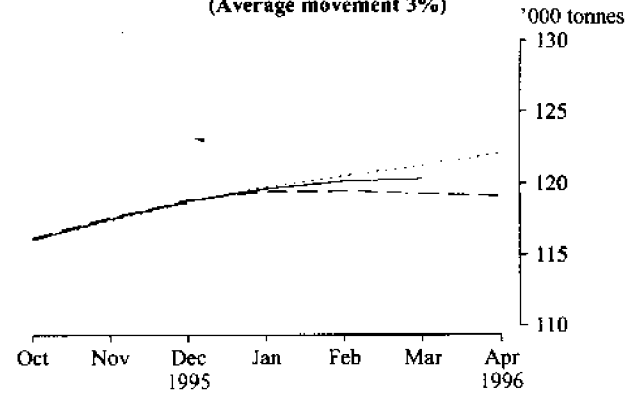
M4. BUTTER(b)
(Average movement 7%)



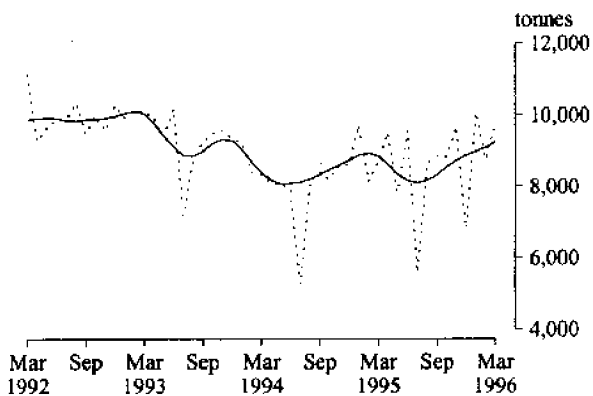
M5. FLOUR OF WHEAT OR OF MESLIN



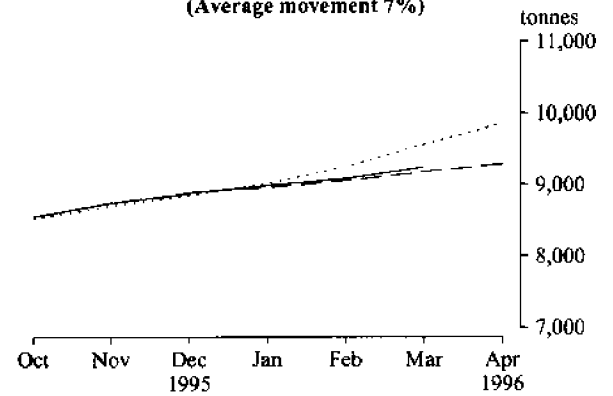
M5. FLOUR OF WHEAT OR OF MESLIN
(Average movement 3%)



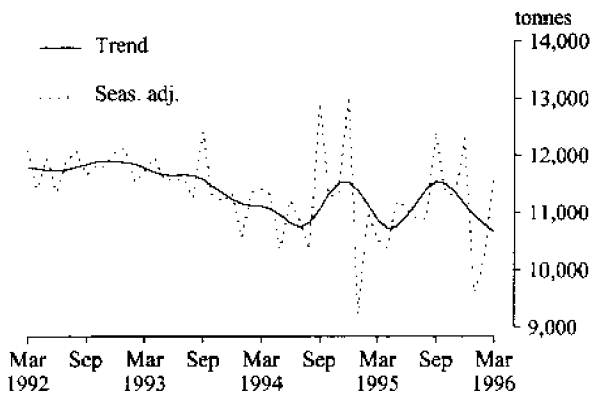
M6. PREPARED FOODS FROM CEREALS



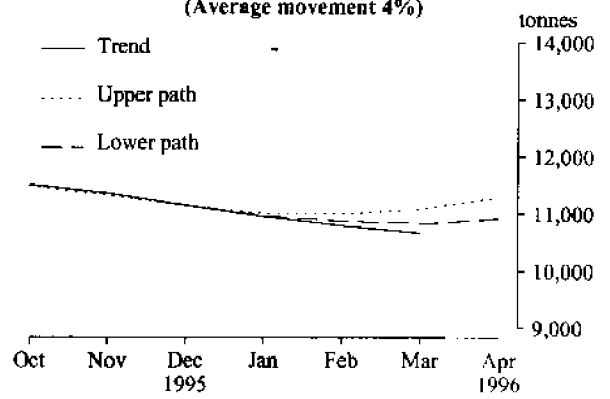
M6. PREPARED FOODS FROM CEREALS
(Average movement 7%)



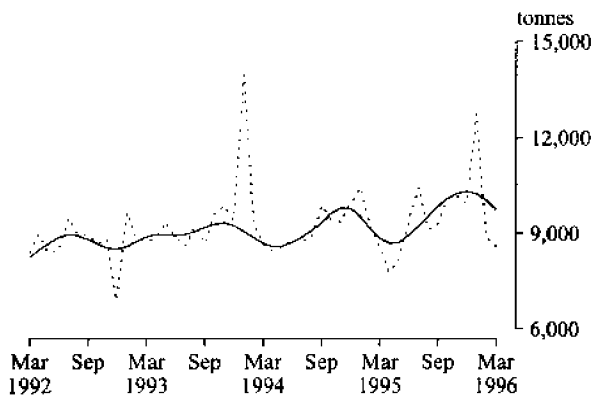
M7. BISCUITS



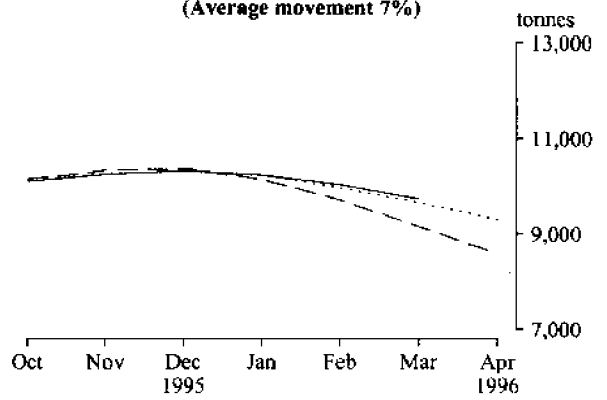
M7. BISCUITS
(Average movement 4%)



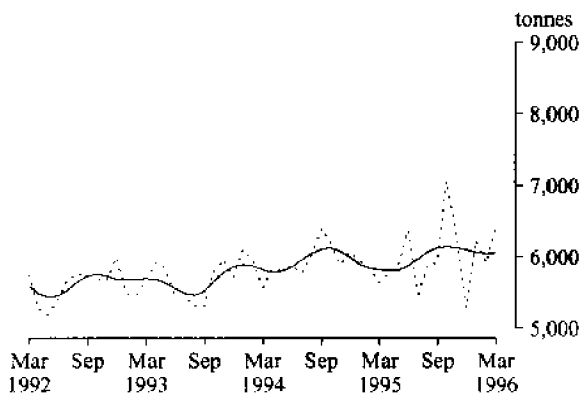
M8. CHOCOLATE BASED CONFECTIONERY



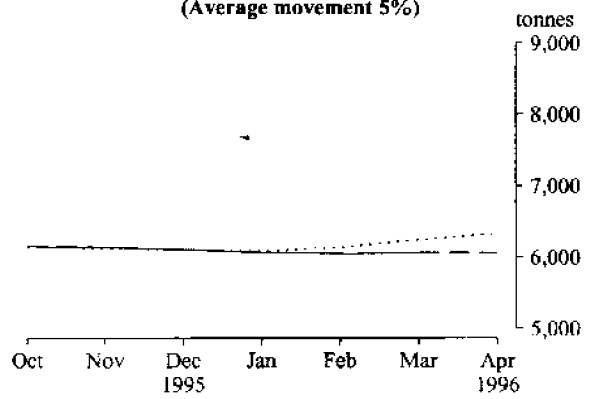
M8. CHOCOLATE BASED CONFECTIONERY
(Average movement 7%)



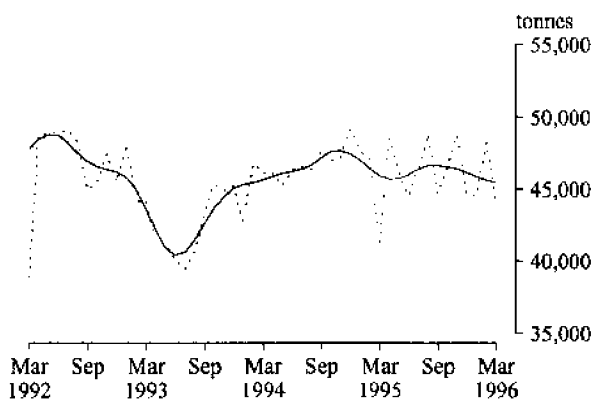
M9. OTHER CONFECTIONERY



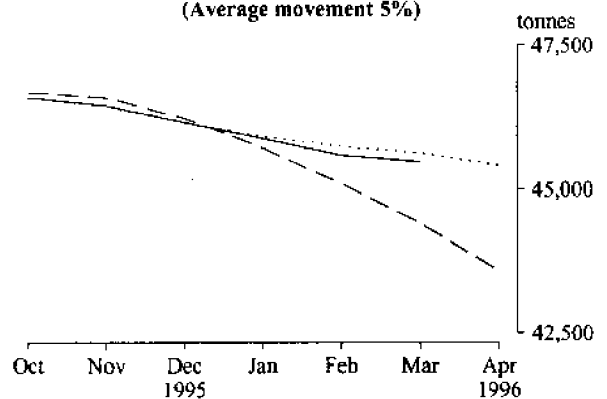
M9. OTHER CONFECTIONERY
(Average movement 5%)

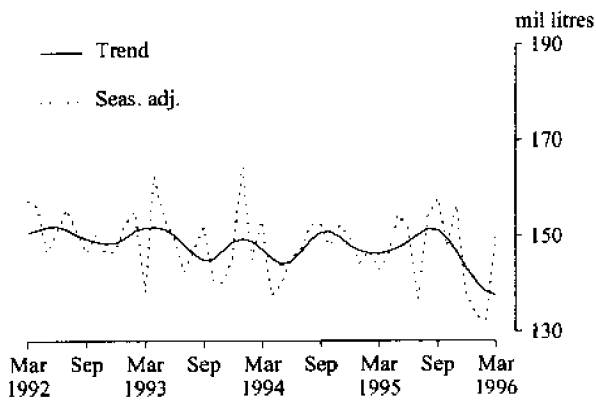
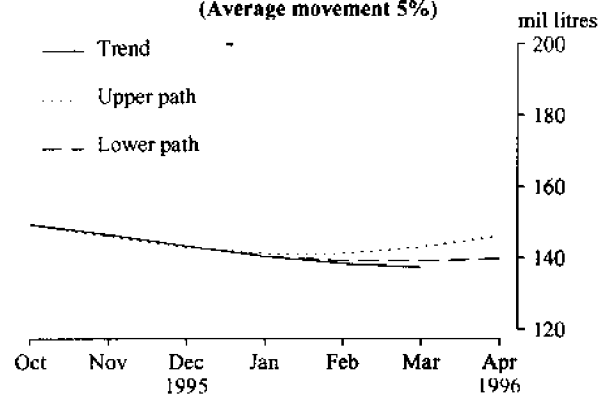
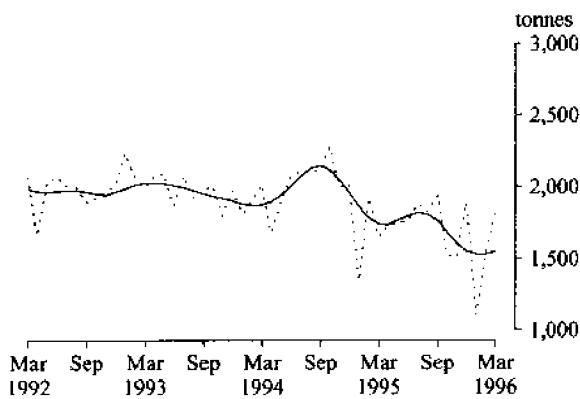
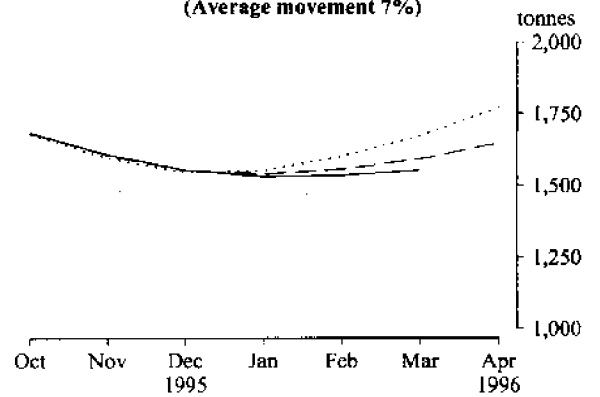
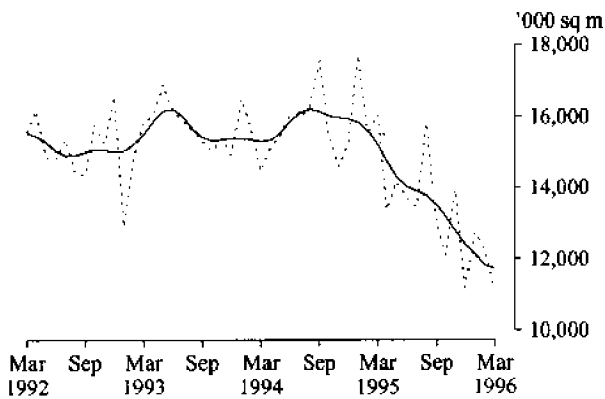
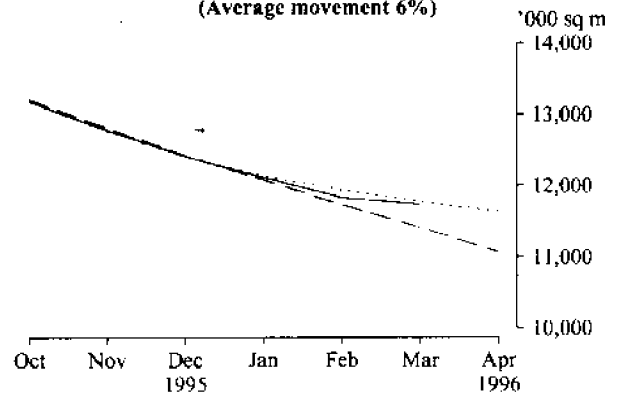
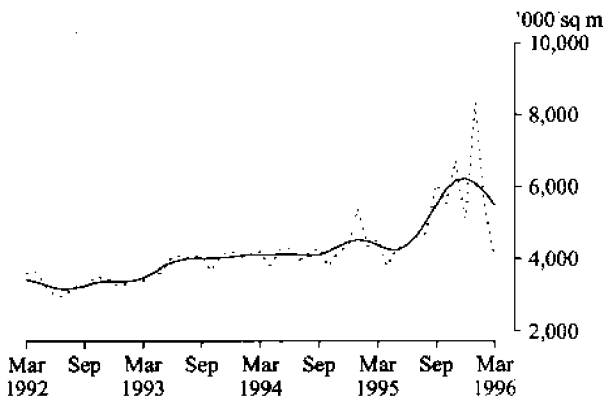
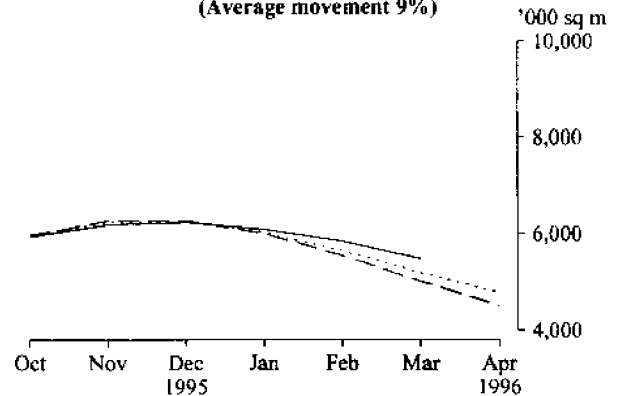


M10. MALT

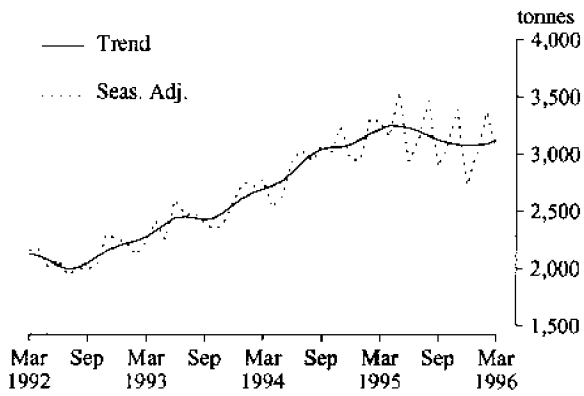


M10. MALT
(Average movement 5%)

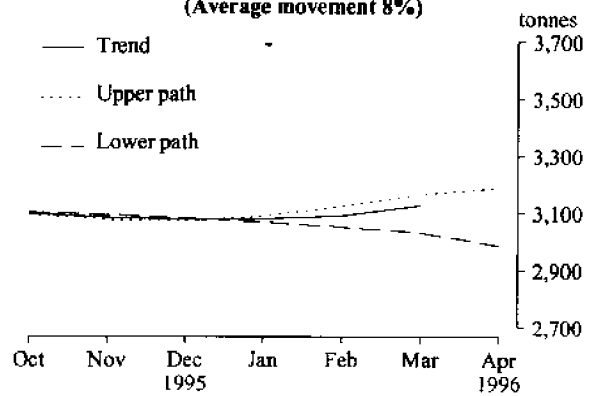


M11. BEER**M11. BEER**
(Average movement 5%)**M12. TOBACCO AND CIGARETTES(c)****M12. TOBACCO AND CIGARETTES(c)**
(Average movement 7%)**M13. MAN-MADE FIBRE WOVEN FABRIC(f)****M13. MAN-MADE FIBRE WOVEN FABRIC(f)**
(Average movement 6%)**M14. COTTON WOVEN FABRIC(f)****M14. COTTON WOVEN FABRIC(f)**
(Average movement 9%)

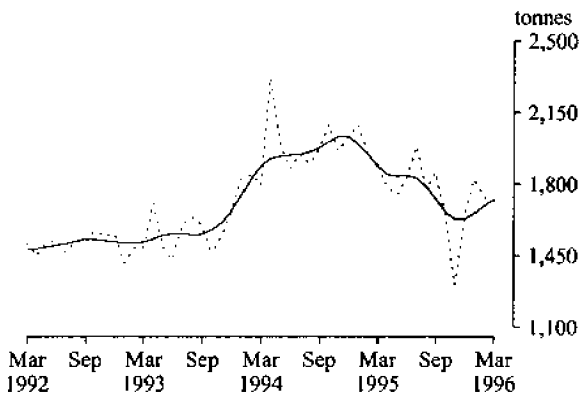
M15. COTTON YARN



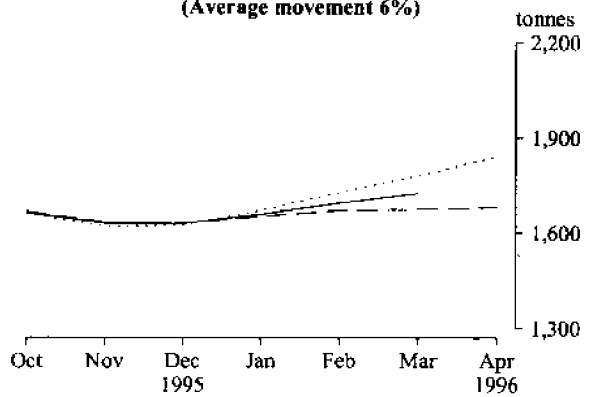
**M15. COTTON YARN
(Average movement 8%)**



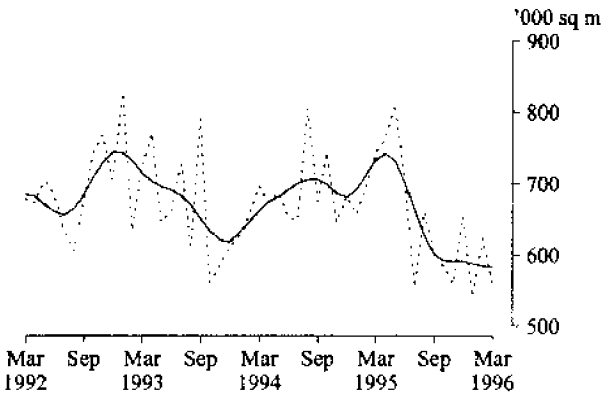
M16. WOOL YARN



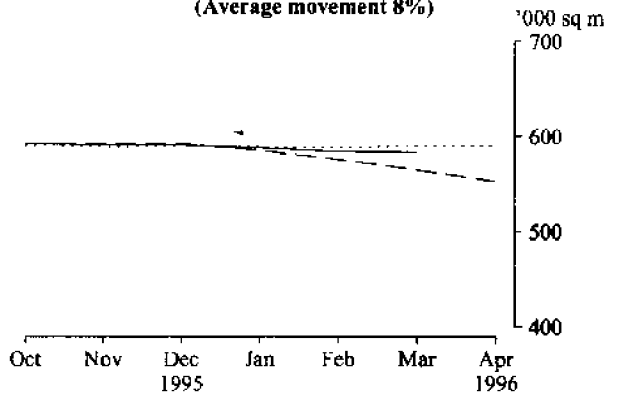
**M16. WOOL YARN
(Average movement 6%)**



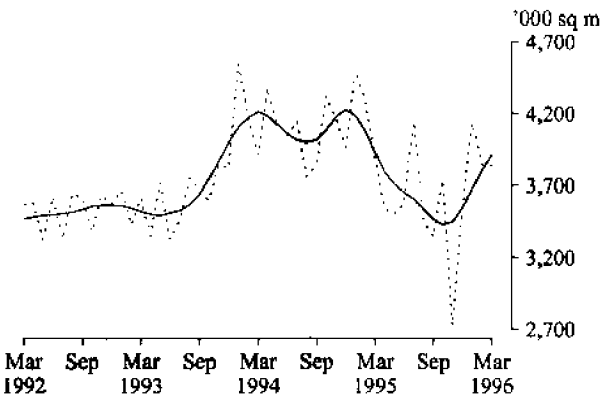
M17. WOOL WOVEN FABRIC



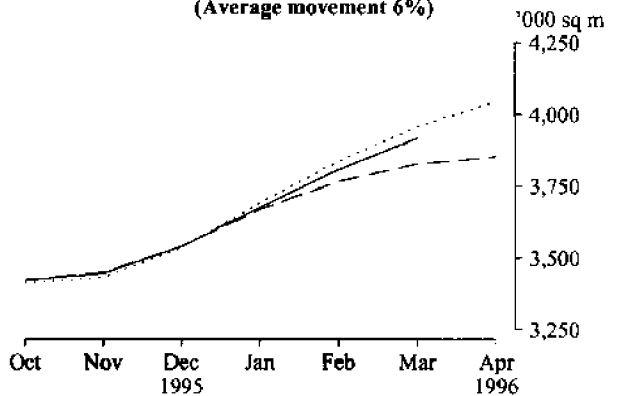
**M17. WOOL WOVEN FABRIC
(Average movement 8%)**



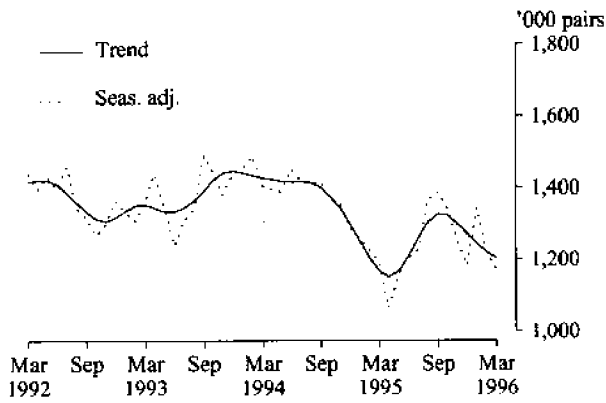
M18. TEXTILE FLOOR COVERINGS



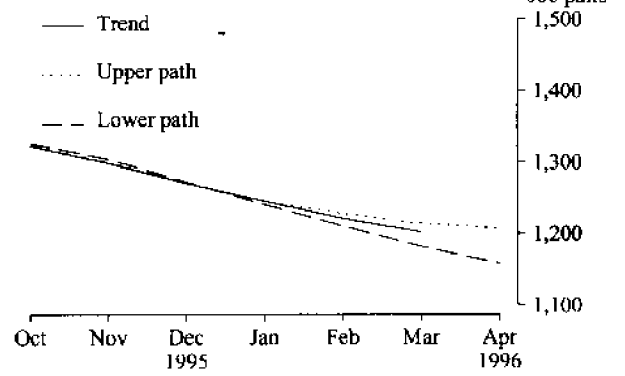
**M18. TEXTILE FLOOR COVERINGS
(Average movement 6%)**



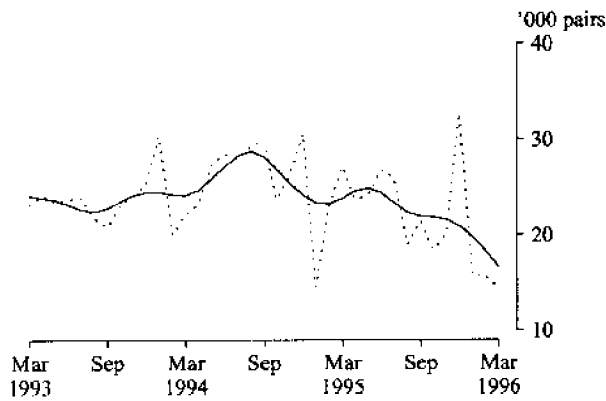
M19. FOOTWEAR (EXCLUDING SPORTS FOOTWEAR)



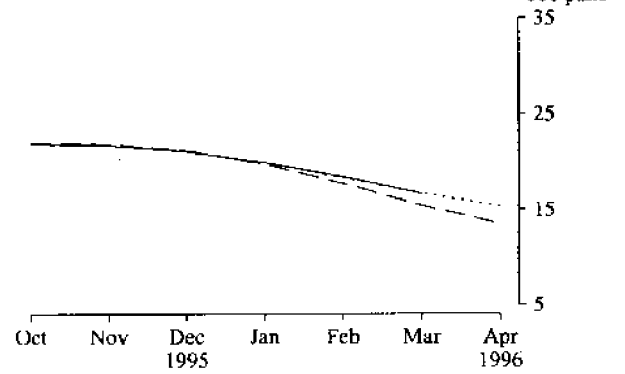
M19. FOOTWEAR (EXCLUDING SPORTS FOOTWEAR)
(Average movement 5%)



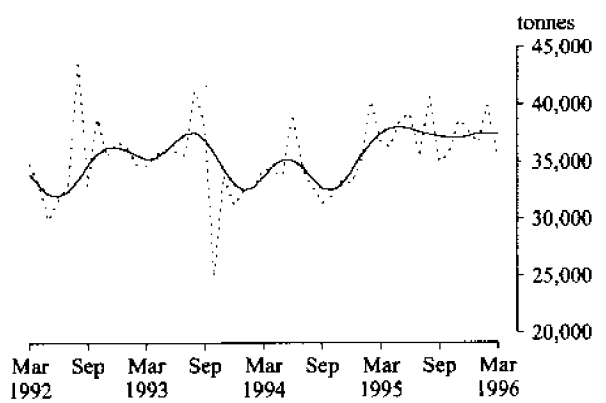
M20. SPORTS FOOTWEAR



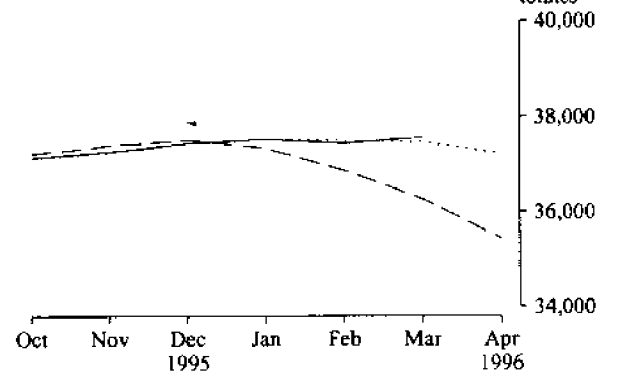
M20. SPORTS FOOTWEAR
(Average movement 15%)



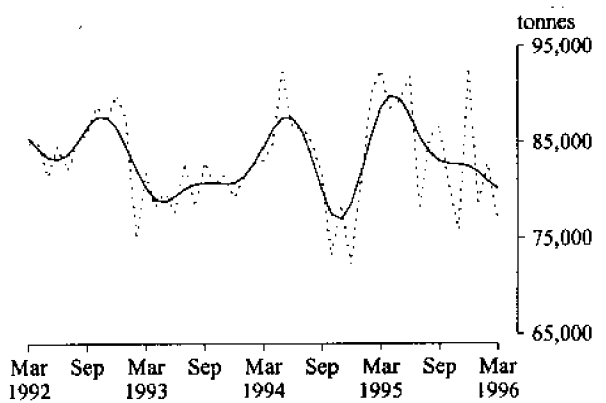
M21. NEWSPRINT



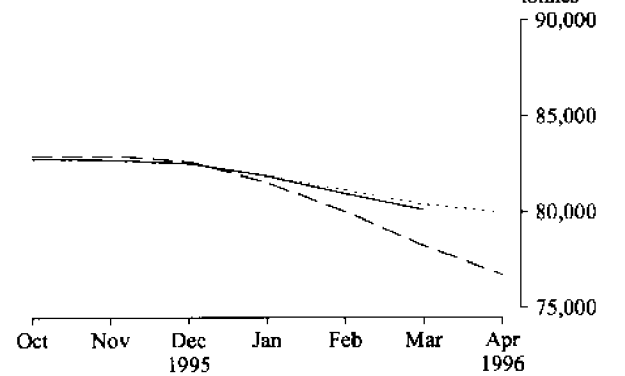
M21. NEWSPRINT
(Average movement 6%)



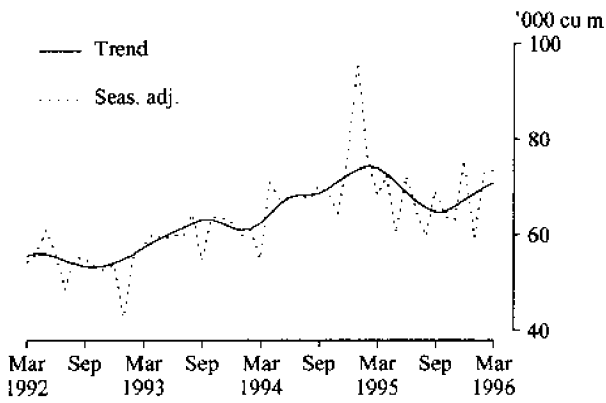
M22. WOOD PULP



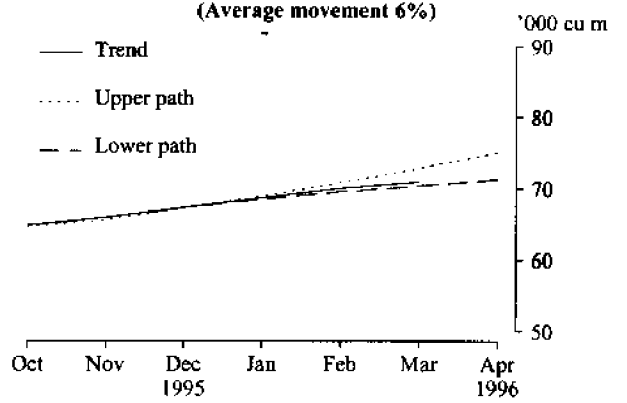
M22. WOOD PULP
(Average movement 4%)



M23. UNLAMINATED PARTICLE BOARD



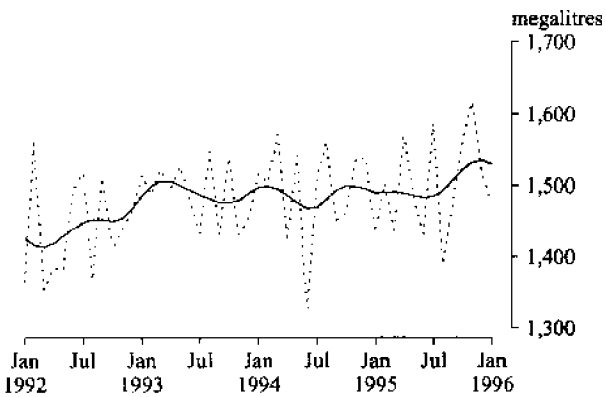
**M23. UNLAMINATED PARTICLE BOARD
(Average movement 6%)**



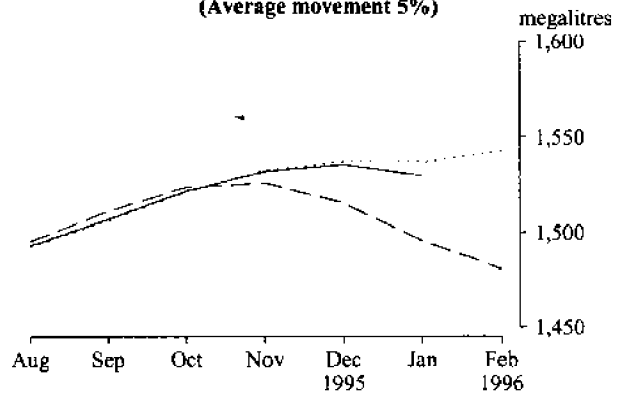
M24. PAPER

Data in this series have not been published since August 1995.

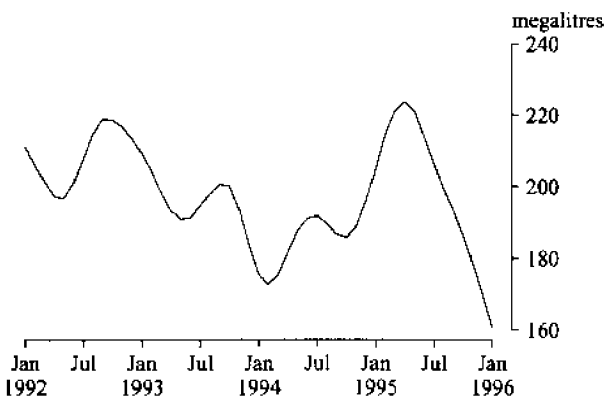
M26. AUTOMOTIVE GASOLINE(d)



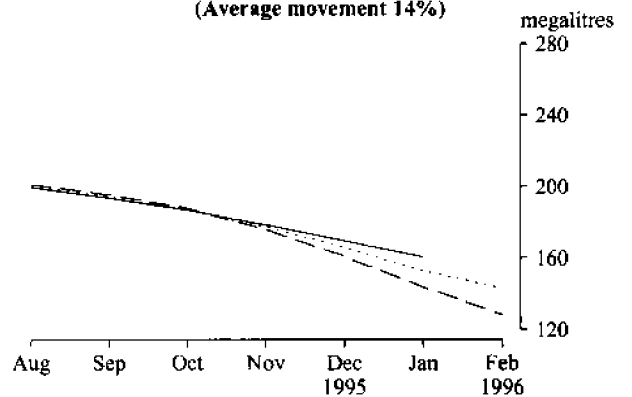
**M26. AUTOMOTIVE GASOLINE(d)
(Average movement 5%)**



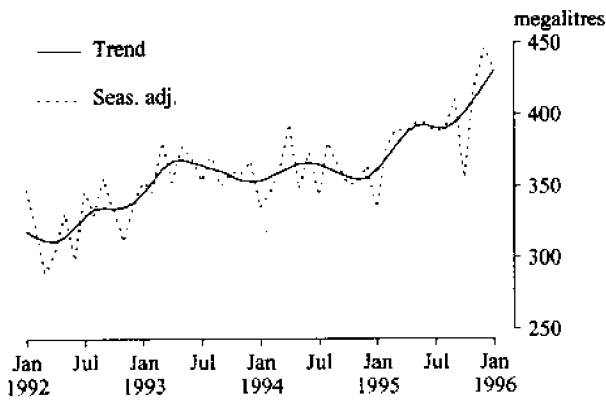
M27. FUEL OIL(d)



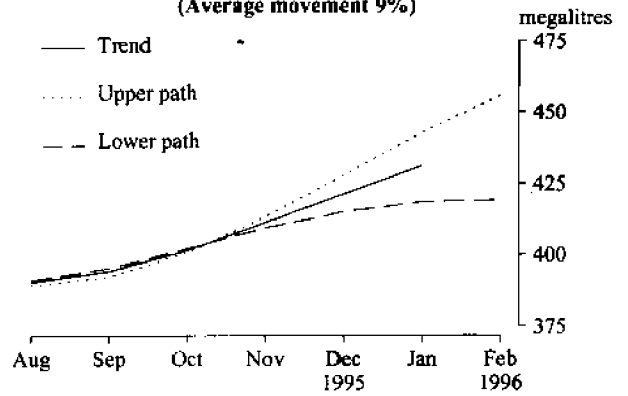
**M27. FUEL OIL(d)
(Average movement 14%)**



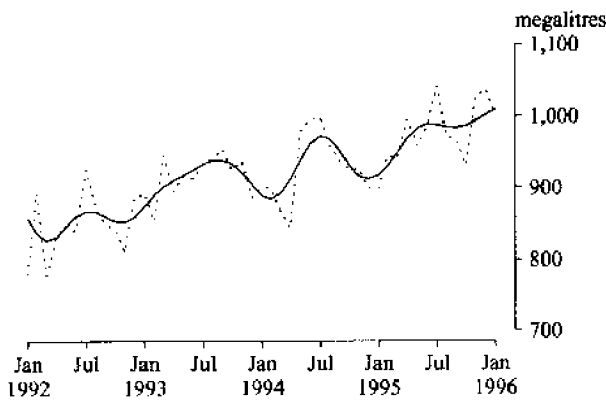
M28. AVIATION TURBINE FUEL(d)



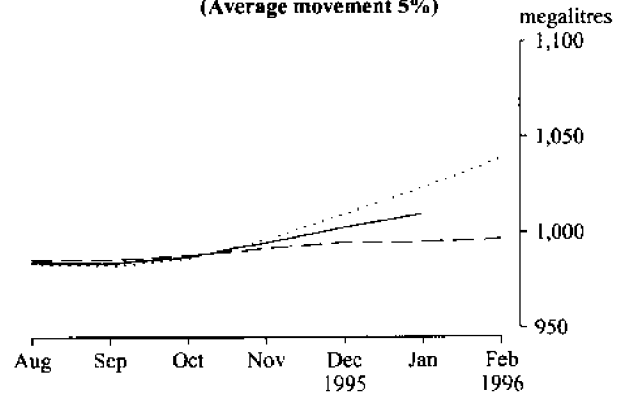
**M28. AVIATION TURBINE FUEL(d)
(Average movement 9%)**



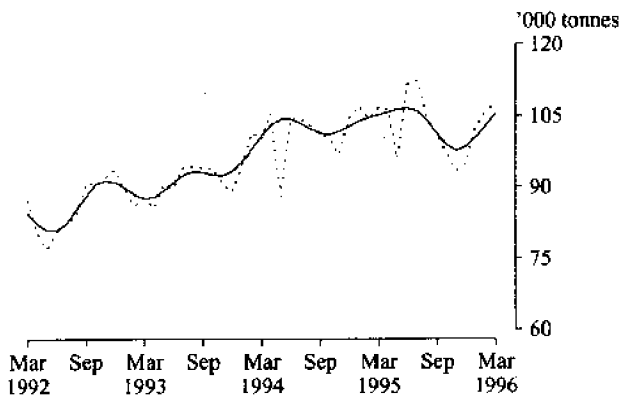
M29. AUTOMOTIVE DIESEL OIL(d)



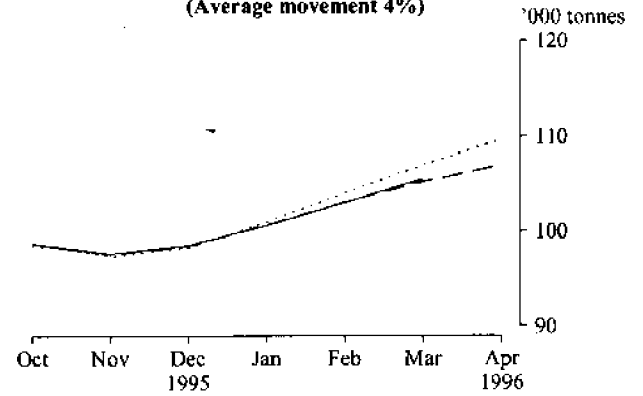
**M29. AUTOMOTIVE DIESEL OIL(d)
(Average movement 5%)**



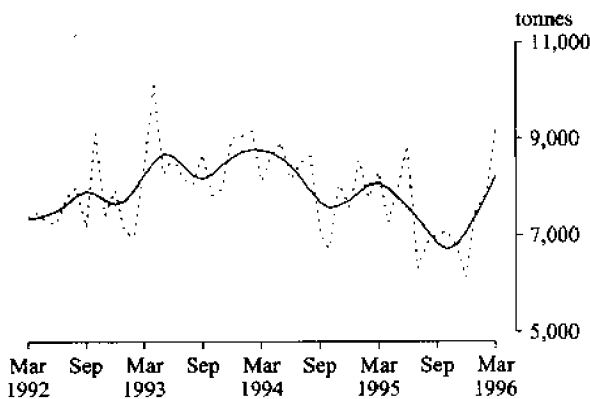
M30. PLASTICS IN PRIMARY FORMS



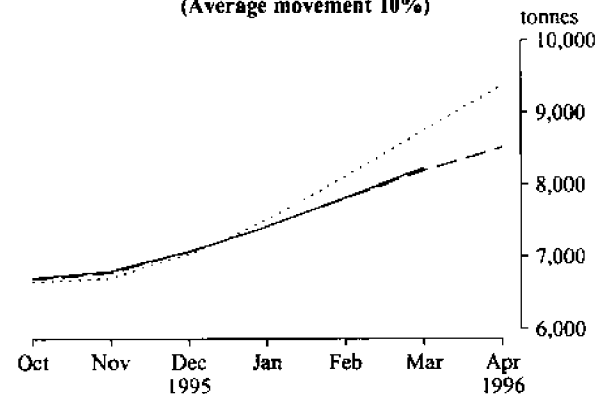
**M30. PLASTICS IN PRIMARY FORMS
(Average movement 4%)**



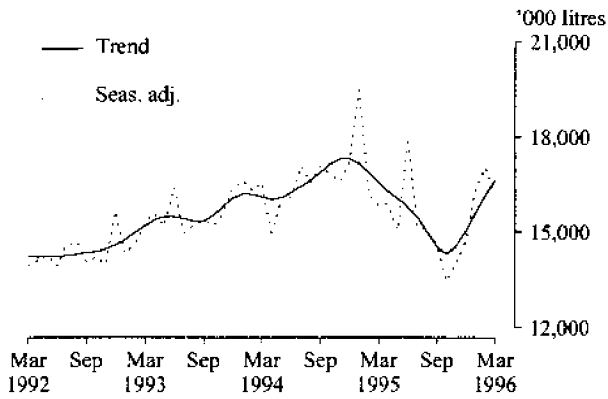
M31. RIGID PVC TUBES, PIPES AND HOSES



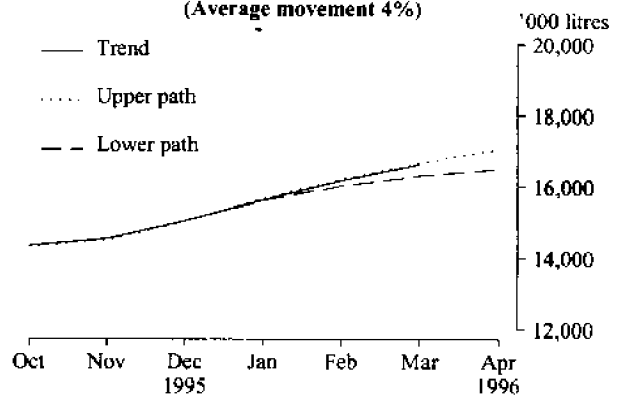
**M31. RIGID PVC TUBES, PIPES AND HOSES
(Average movement 10%)**



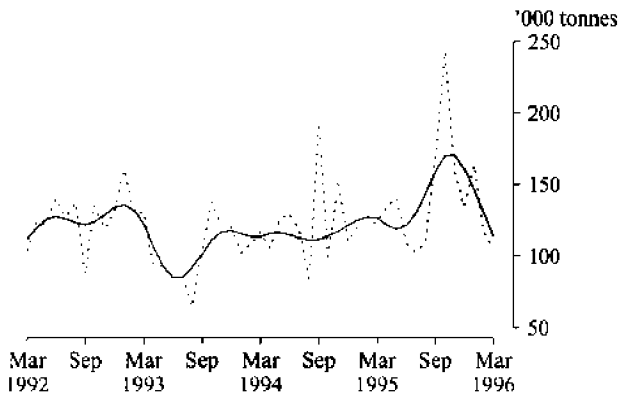
M33. PAINT



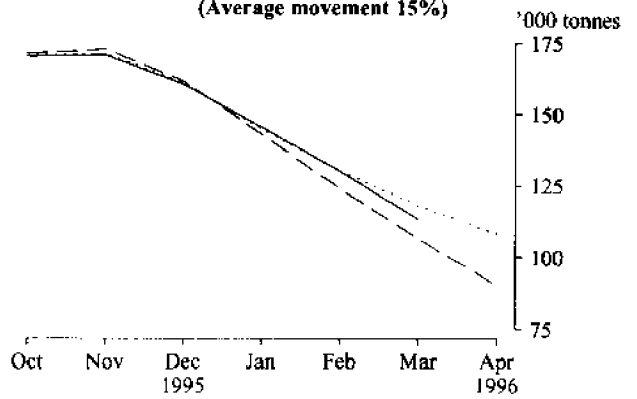
M33. PAINT
(Average movement 4%)



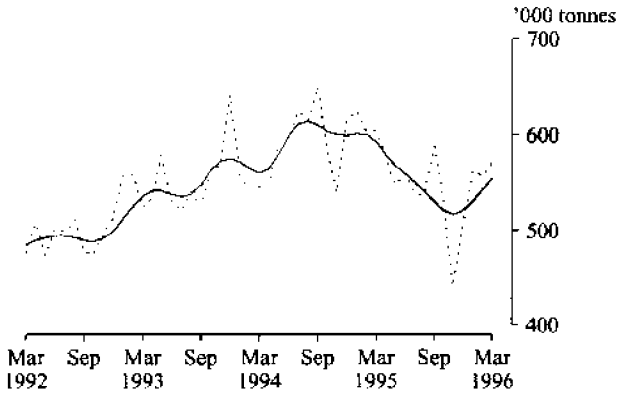
M34. SUPERPHOSPHATES(h)



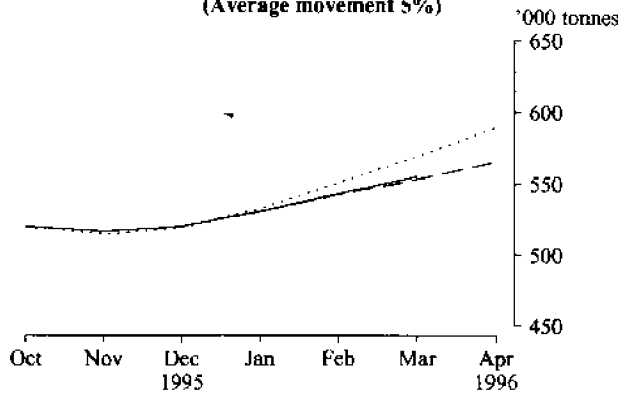
M34. SUPERPHOSPHATES(h)
(Average movement 15%)



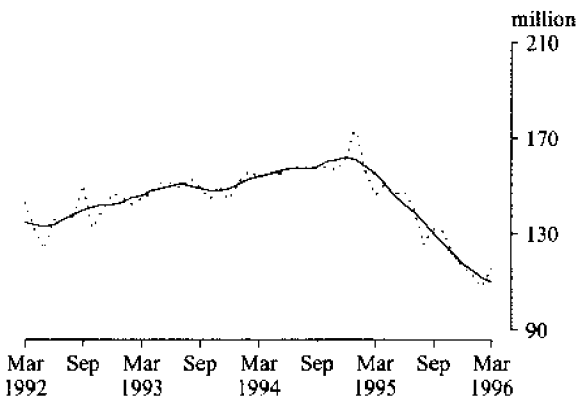
M35. PORTLAND CEMENT



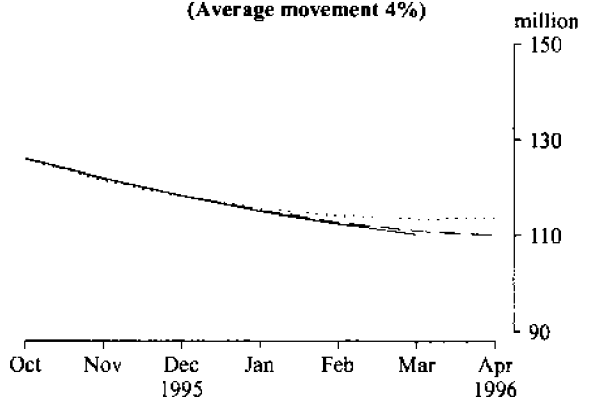
M35. PORTLAND CEMENT
(Average movement 5%)

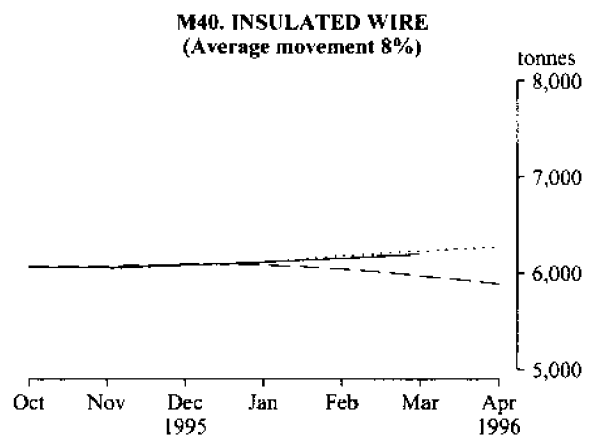
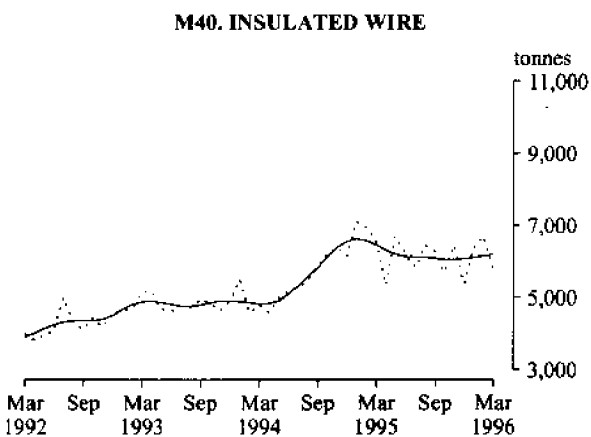
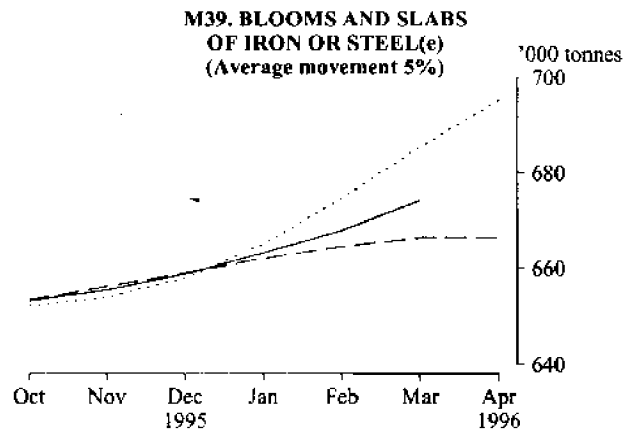
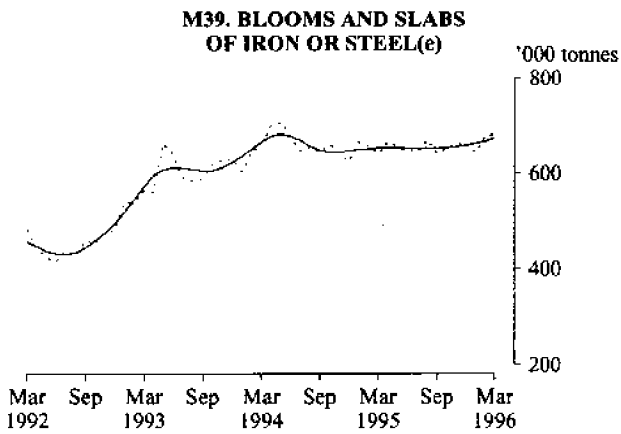
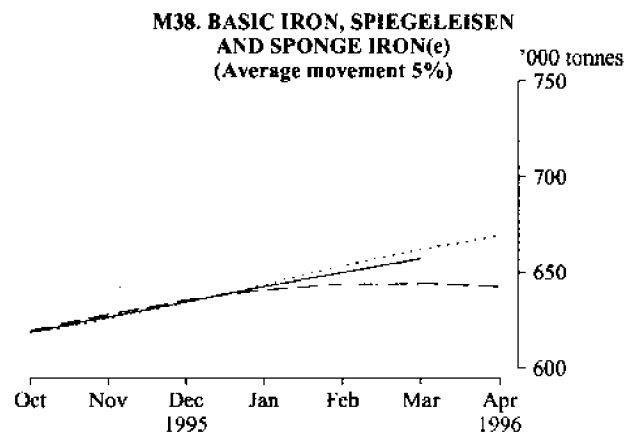
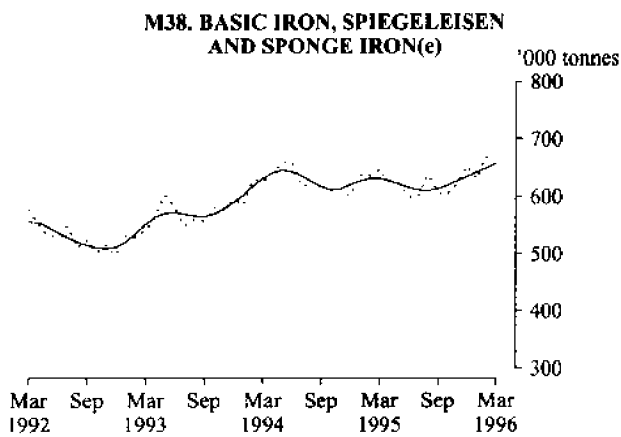
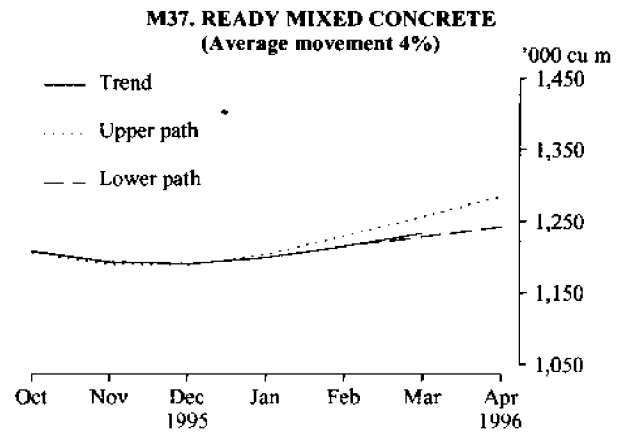
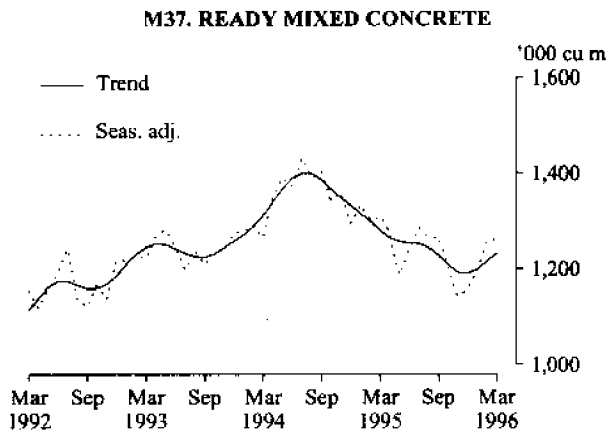


M36. CLAY BRICKS

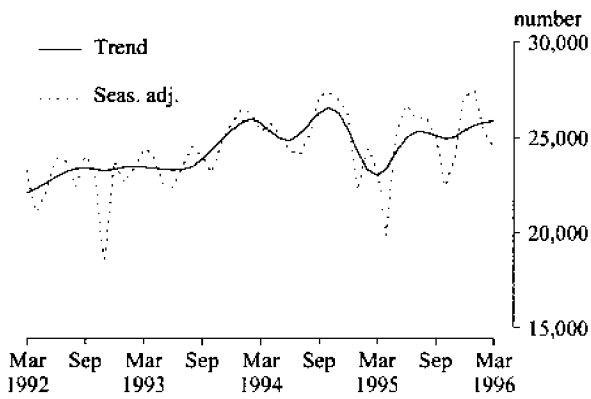


M36. CLAY BRICKS
(Average movement 4%)

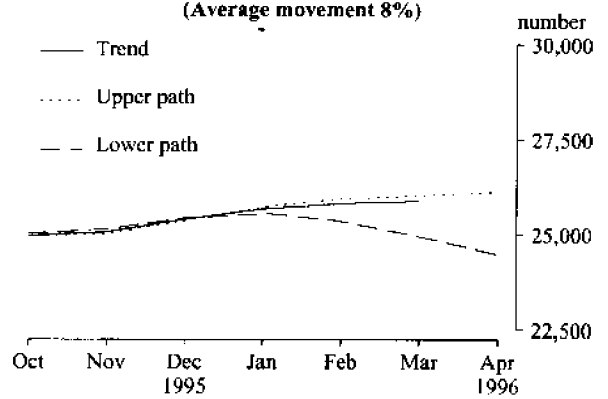




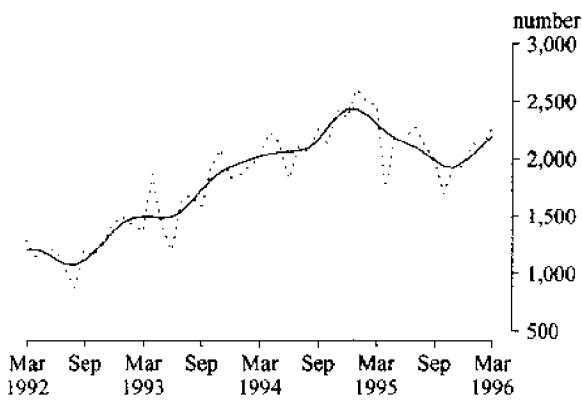
M41. CARS AND STATION WAGONS



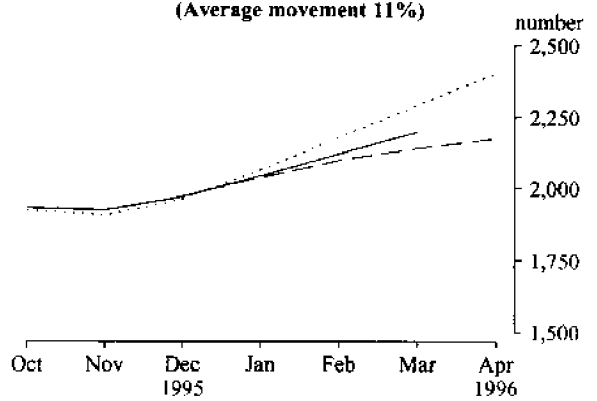
M41. CARS AND STATION WAGONS
(Average movement 8%)



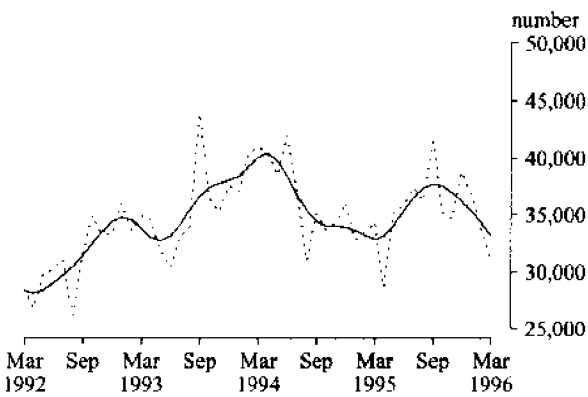
M42. VEHICLES FOR GOODS AND MATERIALS



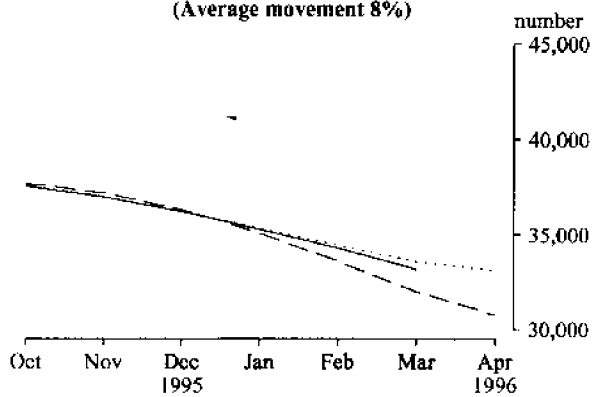
M42. VEHICLES FOR GOODS AND MATERIALS
(Average movement 11%)



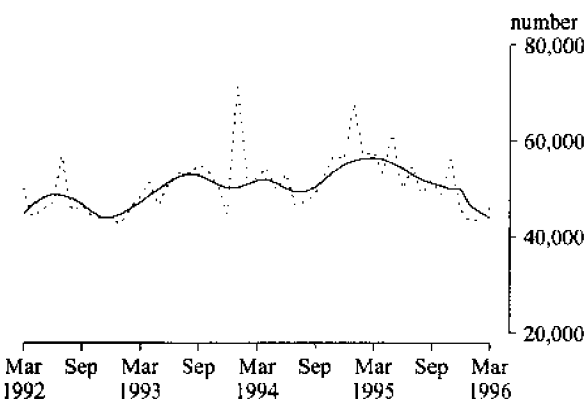
M44. DOMESTIC REFRIGERATORS



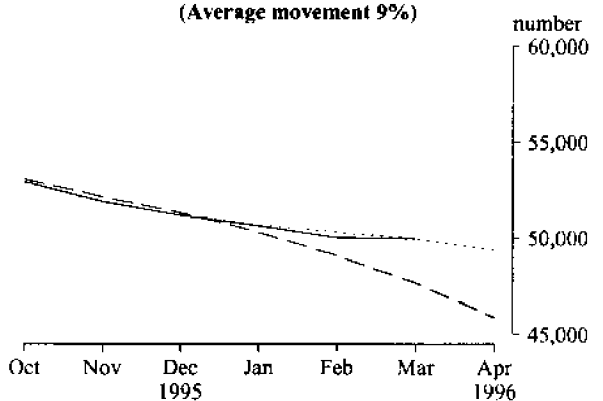
M44. DOMESTIC REFRIGERATORS
(Average movement 8%)



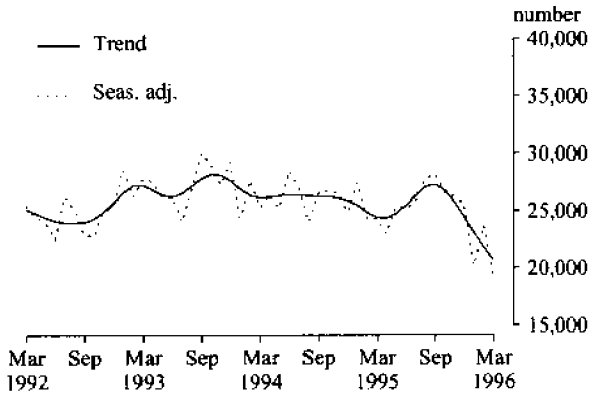
M45. WATER HEATERS



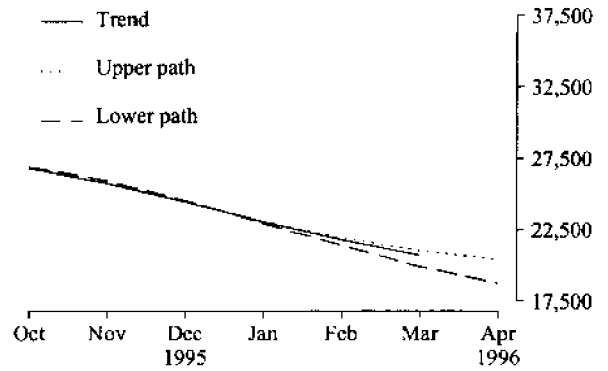
M45. WATER HEATERS
(Average movement 9%)



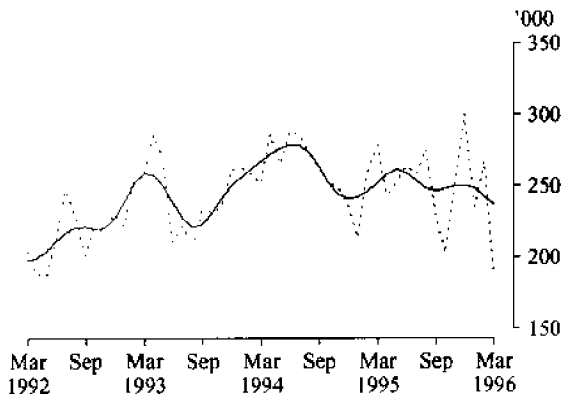
M46. DOMESTIC CLOTHES WASHING MACHINES



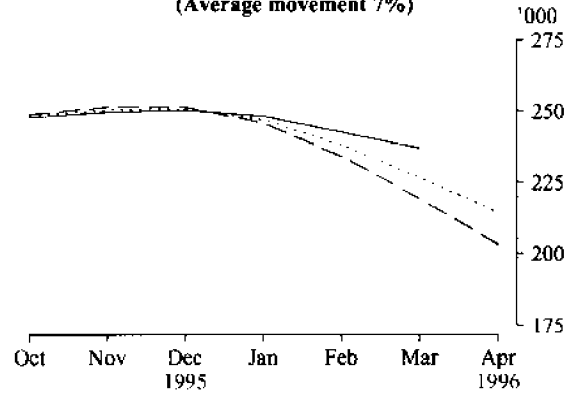
M46. DOMESTIC CLOTHES WASHING MACHINES
(Average movement 9%)



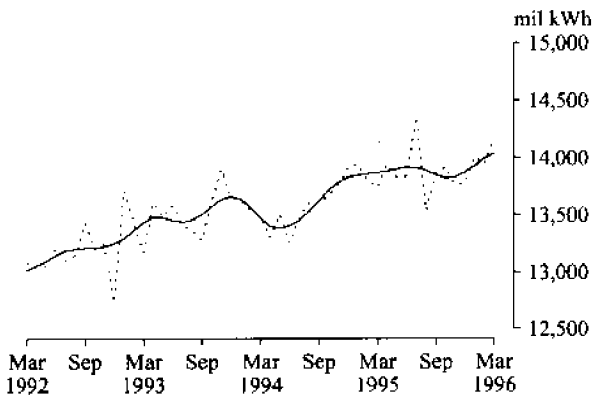
M47. ELECTRIC MOTORS



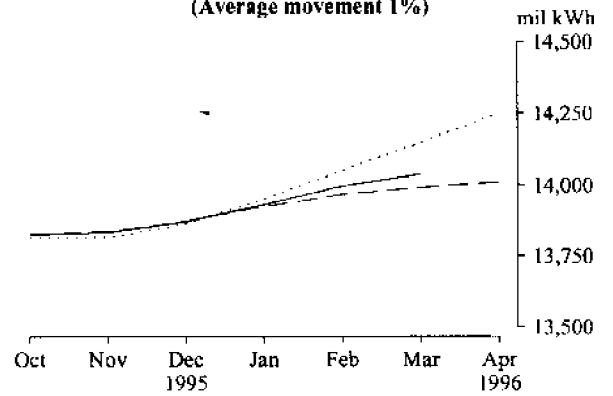
M47. ELECTRIC MOTORS
(Average movement 7%)



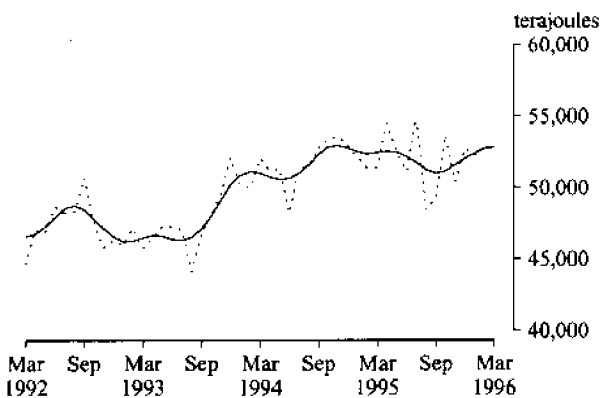
M48. ELECTRICITY



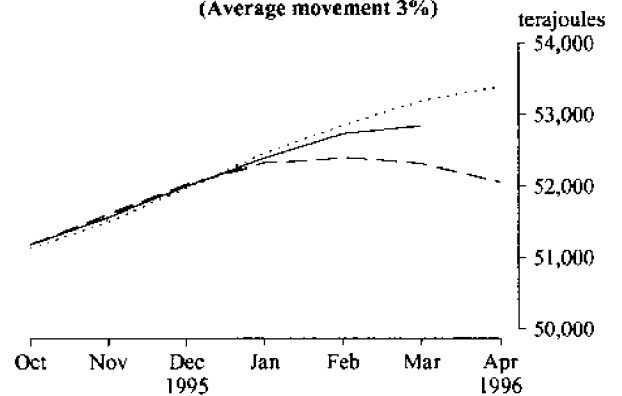
M48. ELECTRICITY
(Average movement 1%)



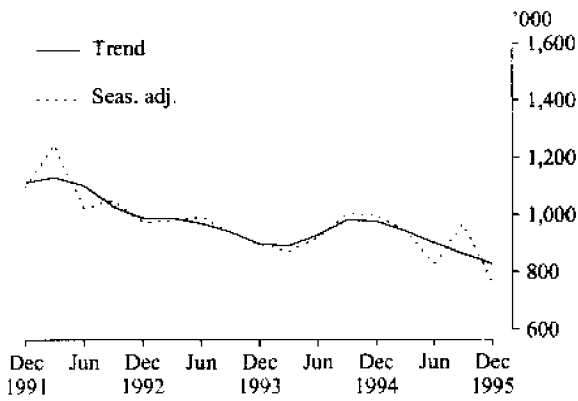
M49. GAS



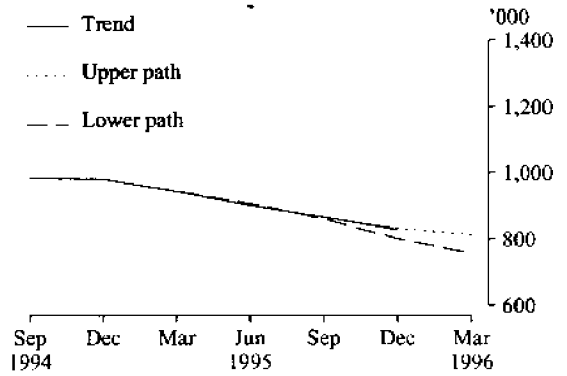
M49. GAS
(Average movement 3%)



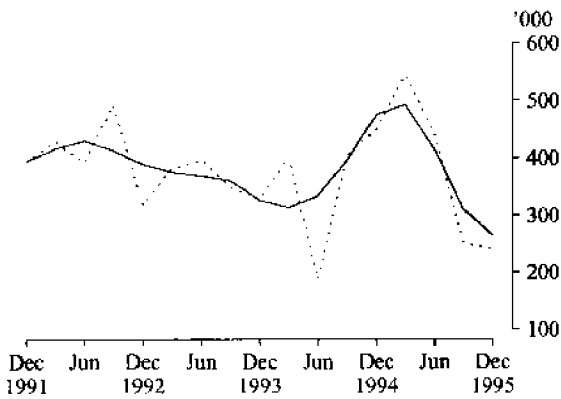
Q1. MEN'S AND BOYS' LONG TROUSERS



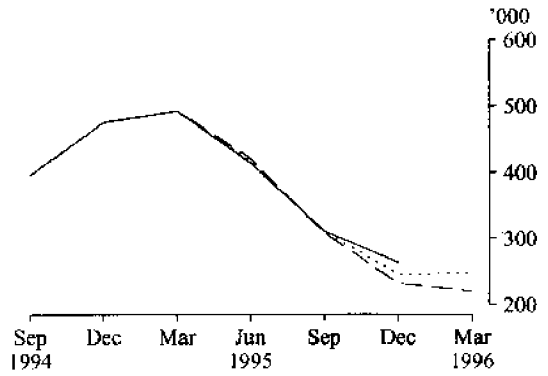
Q1. MEN'S AND BOYS' LONG TROUSERS
(Average movement 7%)



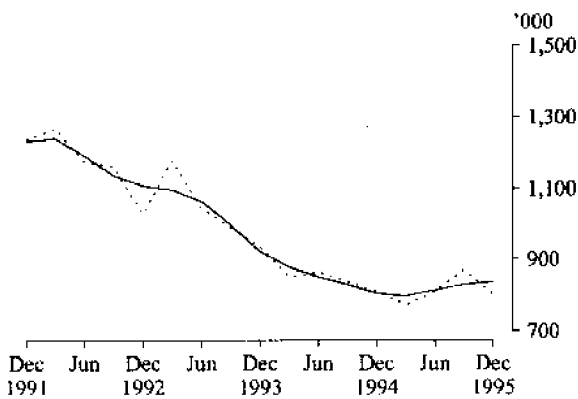
Q2. WOMEN'S AND GIRLS' LONG TROUSERS



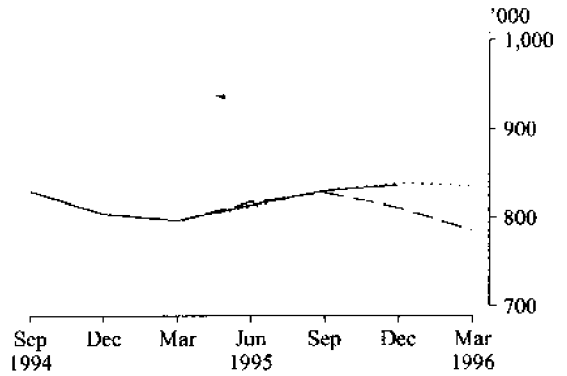
Q2. WOMEN'S AND GIRLS' LONG TROUSERS
(Average movement 11%)



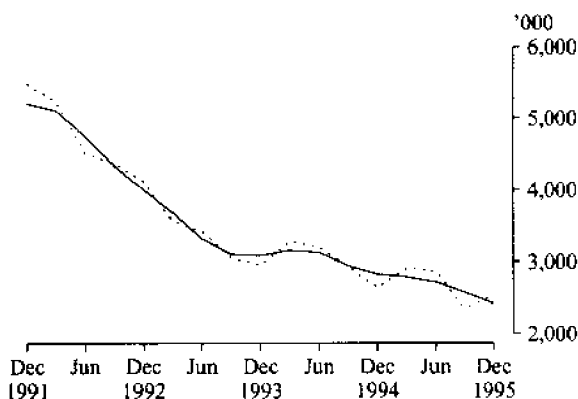
Q3. JEANS



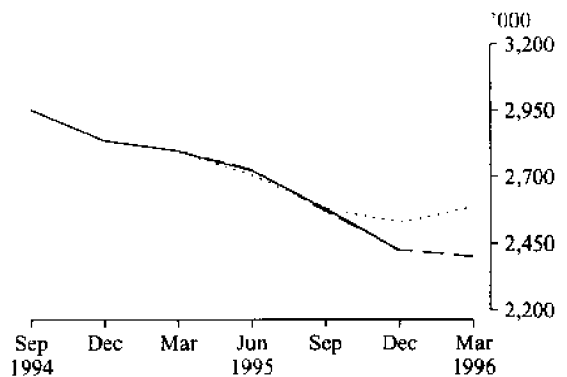
Q3. JEANS
(Average movement 6%)



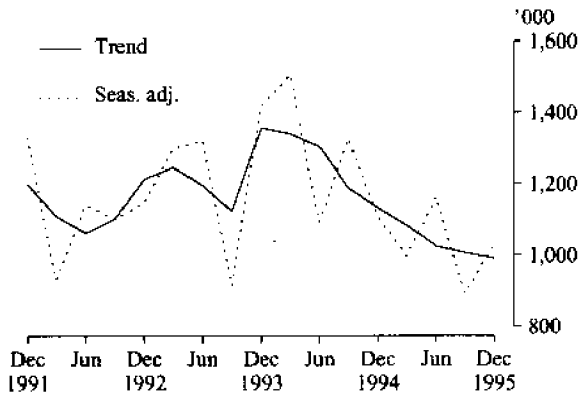
Q4. MEN'S AND BOYS' SHIRTS



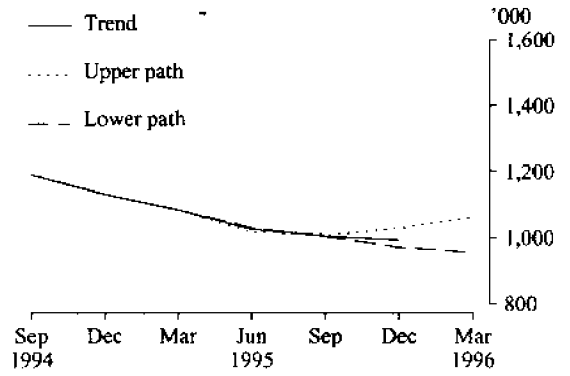
Q4. MEN'S AND BOYS' SHIRTS
(Average movement 7%)



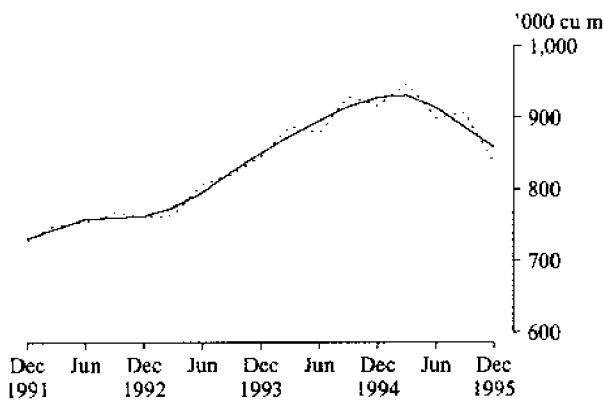
Q5. WOMEN'S SHIRTS AND BLOUSES



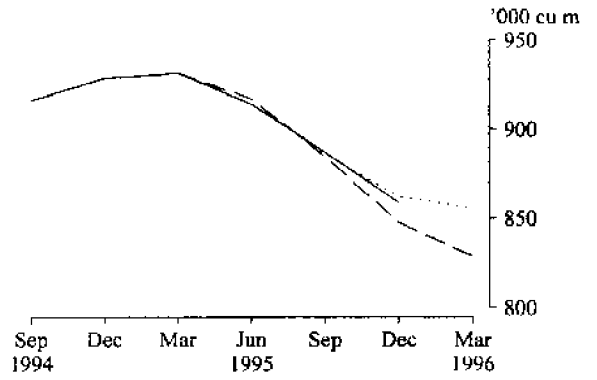
Q5. WOMEN'S SHIRTS AND BLOUSES
(Average movement 11%)



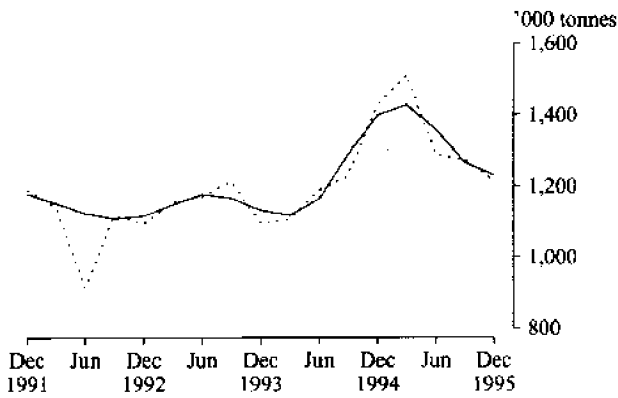
Q6. UNDRESSED SAWN TIMBER(d)



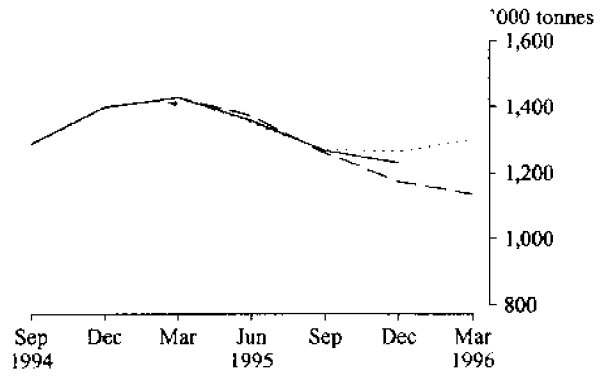
Q6. UNDRESSED SAWN TIMBER(d)
(Average movement 3%)



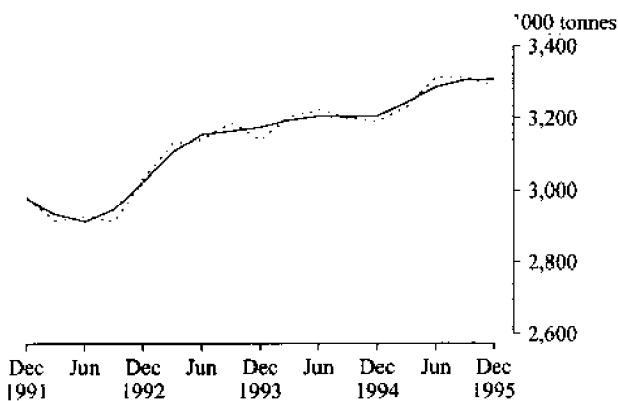
Q7. HARDWOOD WOODCHIPS



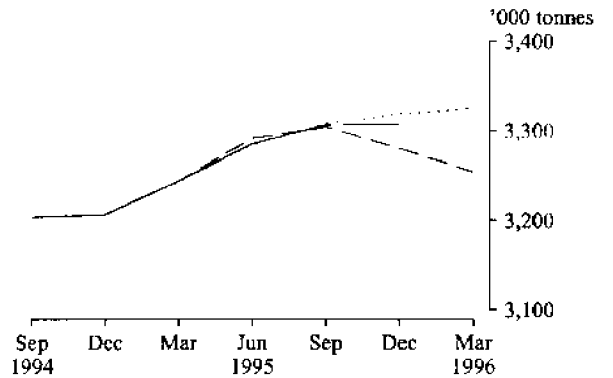
Q7. HARDWOOD WOODCHIPS
(Average movement 7%)



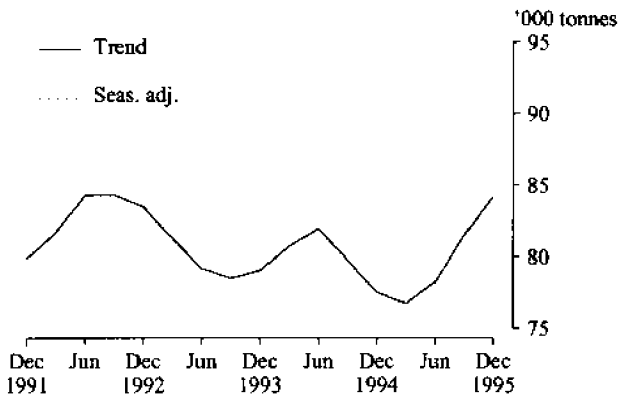
Q8. ALUMINA(d)



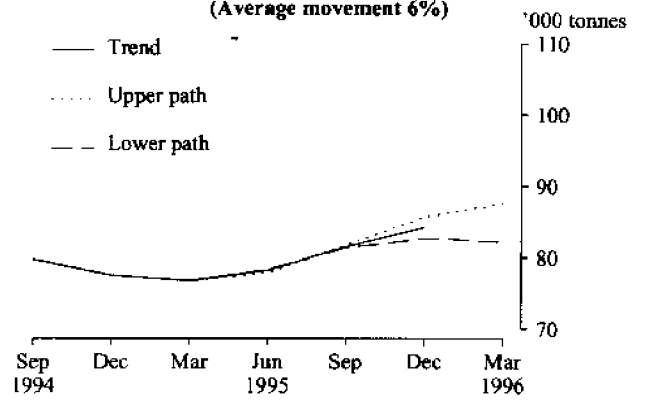
Q8. ALUMINA(d)
(Average movement 2%)



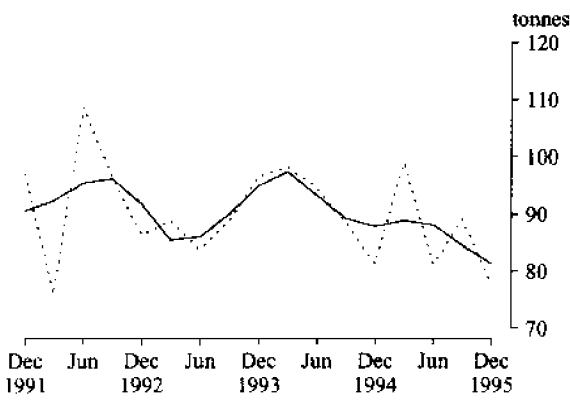
Q9. ZINC(d)



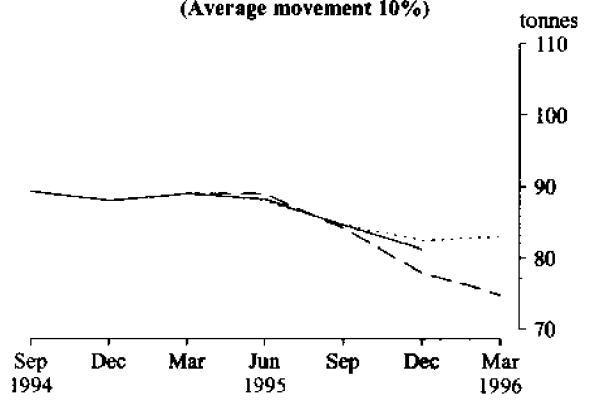
Q9. ZINC(d)
(Average movement 6%)



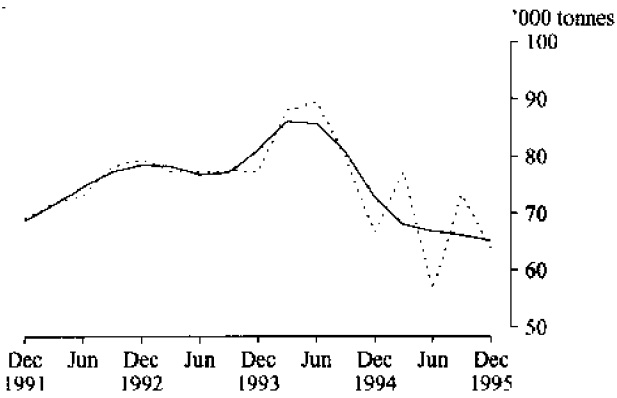
Q10. SILVER(d)



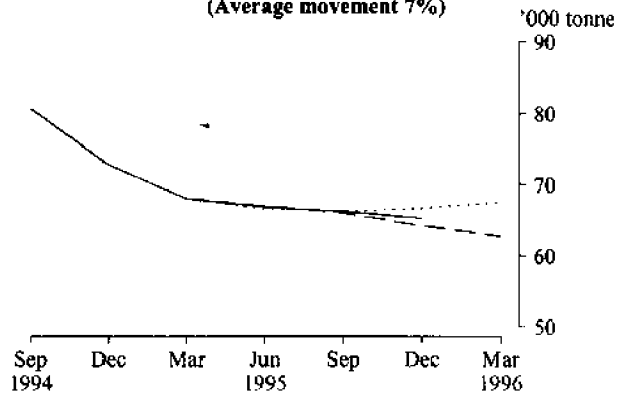
Q10. SILVER(d)
(Average movement 10%)



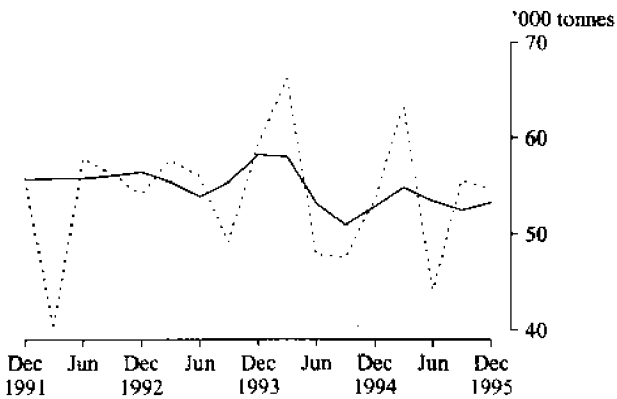
Q11. COPPER(d)



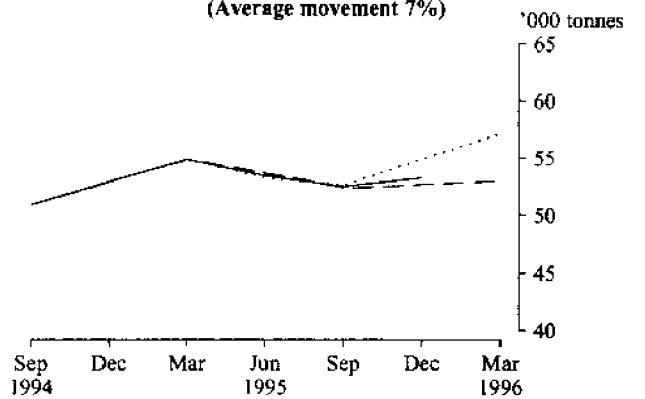
Q11. COPPER(d)
(Average movement 7%)



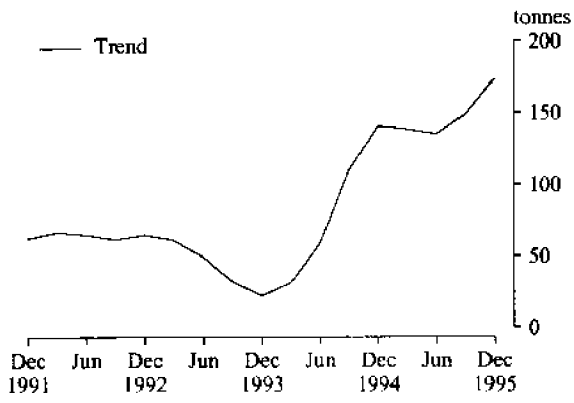
Q12. LEAD(d)



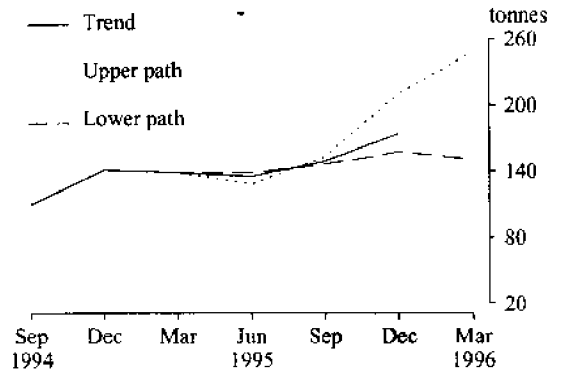
Q12. LEAD(d)
(Average movement 7%)



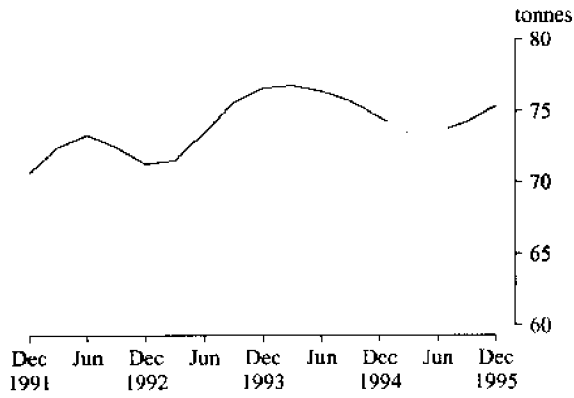
Q13. TIN(d)



Q13. TIN(d)
(Average movement 47%)



Q14. GOLD(d)



Q14. GOLD(d)
(Average movement 7%)

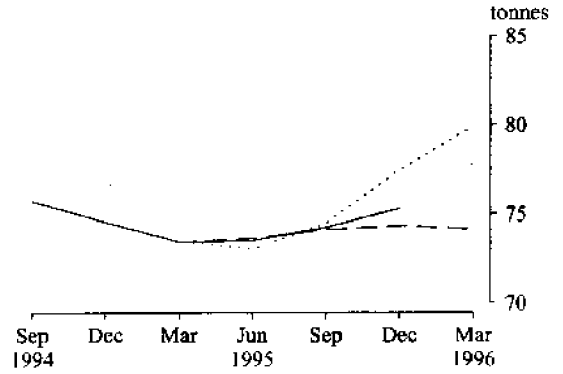


TABLE 1. PRODUCTION STATISTICS, AUSTRALIA, MARCH 1996

No.	Item	Series (a)	Unit	1995					1996			Percentage changes between latest month shown and-		
				July	Aug.	Sept.	Oct.	Nov.	Dec.	Jan.	Feb.	Mar.	prev. month	same month prev. year
M1.	Red meat	Orig.	'000 tonnes	198	228	226	219	239	r 194	r 198	223	227	1.7	-5.7
		S. adj.	"	215	220	218	211	214	r 212	r 224	229	224	-1.9	2.4
		Trend	"	218	217	215	215	216	218	220	223	225	1.2	2.6
M2.	Chicken meat	Orig.	tonnes	39,996	36,781	39,429	37,197	38,014	42,190	r 39,471	38,123	41,328	8.4	-2.5
		S. adj.	"	38,420	38,156	43,481	36,044	38,513	40,987	r 38,015	37,930	43,091	13.6	2.7
		Trend	"	38,208	38,660	39,036	39,160	39,081	39,098	39,336	39,744	40,097	0.9	3.4
M3.	Cheese(b)	Orig. r	"	11,903	17,302	27,088	30,623	29,846	28,484	22,300	n.y.a.	n.y.a.	-21.7	1.6
		S. adj. r	"	20,836	21,977	21,281	20,420	21,515	21,649	17,798	n.y.a.	n.y.a.	-17.8	-2.2
		Trend r	"	22,088	21,891	21,499	21,071	20,676	20,258	19,899	n.y.a.	n.y.a.	-1.8	6.2
M4.	Butter(b)	Orig. r	"	6,493	6,692	10,413	18,689	19,753	18,846	16,227	n.y.a.	n.y.a.	-13.9	14.3
		S. adj. r	"	14,651	10,901	8,916	11,972	11,677	11,817	12,504	n.y.a.	n.y.a.	5.8	13.8
		Trend r	"	11,929	11,762	11,500	11,348	11,416	11,602	11,849	n.y.a.	n.y.a.	2.1	9.7
M5.	Flour of wheat or of meslin	Orig.	'000 tonnes	108	119	120	110	123	119	104	119	124	3.7	6.6
		S. adj.	"	113	111	115	112	117	129	114	119	121	1.6	11.6
		Trend	"	112	113	115	116	118	119	120	120	120	0.2	10.8
M6.	Prepared foods from cereals	Orig.	tonnes	5,928	8,371	9,029	9,024	9,661	6,594	8,371	8,570	10,431	21.7	7.1
		S. adj.	"	5,578	8,672	8,862	8,831	9,666	6,812	10,065	8,758	9,717	11.0	11.2
		Trend	"	8,107	8,181	8,331	8,547	8,739	8,879	8,989	9,091	9,245	1.7	4.5
M7.	Biscuits	Orig.	"	11,231	12,503	13,263	11,856	13,131	10,044	6,384	10,616	12,125	14.2	0.2
		S. adj.	"	10,879	10,891	12,400	11,362	11,273	12,289	9,593	10,216	11,650	14.0	10.6
		Trend	"	11,176	11,410	11,537	11,505	11,354	11,144	10,940	10,793	10,662	-1.2	-1.9
M8.	Chocolate based confectionery	Orig.	"	10,109	11,095	9,706	10,763	11,310	9,440	7,498	9,166	9,070	-1.1	-7.3
		S. adj.	"	10,439	9,126	9,300	10,074	10,146	9,931	12,749	8,845	8,591	-2.9	-0.2
		Trend	"	9,225	9,536	9,846	10,094	10,249	10,310	10,231	10,031	9,723	-3.1	10.0
M9.	Other confectionery	Orig.	"	5,626	7,076	6,742	7,587	7,436	5,001	3,564	5,709	6,518	14.2	9.6
		S. adj.	"	5,478	5,873	5,935	7,061	6,279	5,287	6,233	5,912	6,402	8.3	13.5
		Trend	"	5,976	6,074	6,135	6,151	6,136	6,103	6,068	6,053	6,057	0.1	4.1
M10.	Malt	Orig.	"	44,952	48,402	44,529	44,705	51,787	45,016	42,853	49,747	45,992	-7.5	10.7
		S. adj.	"	46,484	48,790	44,705	46,452	48,753	44,705	44,509	48,199	43,874	-9.0	6.9
		Trend	"	46,447	46,652	46,678	46,588	46,446	46,159	45,880	45,596	45,488	-0.2	-0.9
M11.	Beer	Orig.	mil litres	119	153	144	166	193	161	133	128	147	15.2	-3.0
		S. adj.	"	137	154	158	148	156	138	133	132	150	12.9	4.6
		Trend	"	150	152	151	149	147	143	140	138	138	0.6	6.0
M12.	Tobacco and cigarettes(c)	Orig.	tonnes	2,157	2,070	1,910	1,421	1,671	1,647	667	1,751	1,857	6.0	0.1
		S. adj.	"	1,883	1,824	1,937	1,528	1,506	1,882	1,107	1,532	1,819	18.7	10.1
		Trend	"	1,820	1,813	1,764	1,684	1,606	1,553	1,532	1,535	1,554	1.2	-10.7
M13.	Man-made fibre woven fabric(f)	Orig.	'000 sq m	13,874	16,863	13,530	12,795	14,778	9,663	7,955	r 13,044	12,196	-6.5	-33.4
		S. adj.	"	13,463	15,811	12,987	12,105	13,933	11,183	12,742	r 12,262	11,135	9.2	-30.6
		Trend	"	13,891	13,766	13,527	13,180	12,774	12,411	12,111	11,835	11,738	-0.8	-22.7
M14.	Cotton woven fabric(f)	Orig.	"	4,584	5,256	7,000	5,645	6,892	4,411	3,325	5,756	4,771	-17.1	-12.9
		S. adj.	"	4,631	4,728	6,076	5,513	6,713	5,108	8,334	5,431	4,063	-25.2	-10.3
		Trend	"	4,671	5,061	5,524	5,936	6,178	6,221	6,089	5,838	5,476	-6.2	24.6

For footnotes see end of tables.

TABLE 1. PRODUCTION STATISTICS, AUSTRALIA, MARCH 1996 —continued

No.	Item	Series (a)	Unit	1995					1996			Percentage changes between latest month shown and—		
				July	Aug.	Sept.	Oct.	Nov.	Dec.	Jan.	Feb.	Mar.	prev. month	same month prev. year
M15.	Cotton yarn	Orig.	tonnes	3,094	3,831	3,201	3,077	3,552	2,318	1,901	3,282	3,384	3.1	-12.4
		S. adj.	"	3,132	3,463	2,885	3,084	3,390	2,726	3,014	3,368	3,038	-9.8	-7.3
		Trend	"	3,195	3,158	3,124	3,097	3,082	3,075	3,079	3,090	3,127	1.2	-2.7
M16.	Wool yarn	Orig.	"	2,010	2,117	1,957	1,914	1,444	1,301	1,236	r 1,798	1,605	-10.7	-15.9
		S. adj.	"	1,986	1,778	1,857	1,651	1,306	1,637	1,824	r 1,733	1,714	-1.1	-9.1
		Trend	"	1,829	1,788	1,725	1,664	1,629	1,630	1,657	1,693	1,724	1.8	-8.7
M17.	Wool woven fabric	Orig.	'000 sq m	521	738	586	639	645	526	364	702	608	-13.3	-30.5
		S. adj.	"	555	660	604	585	559	653	541	623	560	-10.1	-24.5
		Trend	"	663	626	601	592	591	591	588	584	583	-0.1	20.6
M18.	Textile floor coverings	Orig.	"	4,037	3,972	3,656	4,057	3,192	3,046	2,483	4,057	3,855	-5.0	-6.1
		S. adj.	"	4,144	3,448	3,345	3,732	2,724	3,536	4,132	3,841	3,845	0.1	-1.4
		Trend	"	3,600	3,536	3,464	3,423	3,447	3,543	3,675	3,809	3,916	2.8	0.3
M19.	Footwear excluding sports footwear	Orig.	'000 pairs	1,206	1,497	1,445	1,446	1,358	1,006	749	r 1,307	1,322	1.1	-6.6
		S. adj.	"	1,228	1,366	1,388	1,340	1,258	1,181	1,342	r 1,222	1,169	-4.3	-1.9
		Trend	"	1,261	1,304	1,326	1,322	1,299	1,270	1,245	1,221	1,203	-1.5	3.2
M20.	Sports footwear	Orig.	"	25	24	24	17	24	23	7	18	17	-8.5	-51.4
		S. adj.	"	26	19	21	18	20	33	16	16	14	-8.9	-47.1
		Trend	"	23	22	22	22	22	21	20	18	17	9.5	30.4
M21.	Newsprint	Orig.	tonnes	35,192	39,758	33,033	36,142	38,931	36,733	38,631	40,350	36,111	-10.5	-3.4
		S. adj.	"	35,408	40,664	34,990	35,720	38,623	37,718	36,617	39,909	35,231	-11.7	-4.1
		Trend	"	37,621	37,407	37,224	37,126	37,131	37,256	37,512	37,433	37,553	0.3	0.0
M22.	Wood pulp	Orig.	"	77,150	85,922	89,979	75,865	78,435	92,434	80,019	83,003	78,760	-5.1	-18.0
		S. adj.	"	77,892	85,410	86,705	80,534	75,844	92,730	78,802	82,764	76,705	-7.3	17.1
		Trend	"	85,538	83,894	83,078	82,820	82,750	82,525	81,901	80,982	80,124	-1.1	9.6
M23.	Unlaminated particle board	Orig.	'000 cu m	62	74	72	69	79	57	36	73	74	1.4	-8.5
		S. adj.	"	65	60	69	64	63	75	59	73	73	0.7	7.7
		Trend	"	67	66	65	65	66	67	69	70	71	1.3	-4.1
M24.	Paper(g)	Orig.	'000 tonnes	144	148	n.p.	n.p.	n.p.	n.p.	n.p.	n.p.	n.p.	2.7	2.7
		S. adj.	"	133	151	n.p.	n.p.	n.p.	n.p.	n.p.	n.p.	n.p.	13.6	6.6
		Trend	"	149	147	n.p.	n.p.	n.p.	n.p.	n.p.	n.p.	n.p.	-1.6	5.4
M25.	Paperboard containers	Orig.	tonnes	87,375	99,527	93,981	99,183	106,020	82,812	86,684	90,542	91,738	1.3	-0.2
		S. adj.	"	n.a.	n.a.	n.a.	n.a.	n.a.	n.a.	n.a.	n.a.	n.a.	n.a.	n.a.
		Trend	"	n.a.	n.a.	n.a.	n.a.	n.a.	n.a.	n.a.	n.a.	n.a.	n.a.	n.a.
M26.	Automotive gasoline(d)	Orig.	megalitres	1,671	1,446	1,453	1,528	1,487	1,537	1,561	n.y.a.	n.y.a.	1.6	2.8
		S. adj.	"	1,587	1,389	1,472	1,560	1,617	1,517	1,476	n.y.a.	n.y.a.	-2.7	2.9
		Trend	"	1,485	1,493	1,507	1,522	1,532	1,536	1,530	n.y.a.	n.y.a.	-0.4	2.7
M27.	Fuel oil(d)	Orig.	"	234	178	232	156	164	209	129	n.y.a.	n.y.a.	-38.1	-43.2
		S. adj.	"	n.a.	n.a.	n.a.	n.a.	n.a.	n.a.	n.a.	n.a.	n.a.	n.a.	n.a.
		Trend	"	206	200	194	187	179	170	161	n.y.a.	n.y.a.	-5.5	21.7
M28.	Aviation turbine fuel(d)	Orig.	"	377	417	403	400	430	463	452	n.y.a.	n.y.a.	-2.2	22.9
		S. adj.	"	388	391	411	355	420	447	431	n.y.a.	n.y.a.	-3.5	29.0
		Trend	"	391	390	394	402	411	421	431	n.y.a.	n.y.a.	2.3	19.3

For footnotes see end of tables.

TABLE 1. PRODUCTION STATISTICS, AUSTRALIA, MARCH 1996 —continued

No.	Item	Series (a)	Unit	1995						1996			Percentage changes between latest month shown and—	
				July	Aug.	Sept.	Oct.	Nov.	Dec.	Jan.	Feb.	Mar.	prev. month	same month prev. year
M29.	Automotive diesel oil(d)	Orig.	megalitres	1,047	977	946	956	1,011	1,119	1,049	n.y.a.	n.y.a.	-6.3	11.6
		S. adj.	"	1,043	972	967	930	1,027	1,038	1,002	n.y.a.	n.y.a.	-3.5	11.5
		Trend	"	988	985	984	987	994	1,003	1,010	n.y.a.	n.y.a.	0.7	9.9
M30.	Plastics in primary forms	Orig.	'000 tonnes	116	110	104	108	96	85	98	102	108	6.0	-4.6
		S. adj.	"	112	104	101	97	93	95	103	106	108	1.6	0.8
		Trend	"	106	104	101	99	98	99	101	103	105	2.4	0.1
M31.	Rigid PVC tubes, pipes and hoses	Orig.	tonnes	7,521	7,520	6,612	7,058	7,649	5,588	4,479	8,753	9,229	5.4	3.1
		S. adj.	"	6,301	6,868	7,029	7,076	6,774	6,127	7,506	7,859	9,178	16.8	10.5
		Trend	"	7,336	7,078	6,825	6,711	6,801	7,075	7,427	7,822	8,230	5.2	1.9
M32.	Polyethylene bottles up to two litres	Orig.	million	97	112	123	125	121	147	119	129	140	9.1	27.5
		S. adj.	"	n.a.	n.a.	n.a.	n.a.	n.a.	n.a.	n.a.	n.a.	n.a.	n.a.	n.a.
		Trend	"	n.a.	n.a.	n.a.	n.a.	n.a.	n.a.	n.a.	n.a.	n.a.	n.a.	n.a.
M33.	Paint	Orig.	'000 litres	14,768	14,345	16,001	14,385	14,914	15,103	13,006	16,714	17,501	4.7	-2.5
		S. adj.	"	15,197	15,090	14,585	13,459	14,002	14,753	16,357	17,051	16,204	-5.0	2.2
		Trend	"	15,471	15,000	14,528	14,343	14,541	15,051	15,634	16,166	16,648	3.0	0.5
M34.	Superphosphates(h)	Orig. r	'000 tonnes	59	66	89	166	183	162	208	171	161	-5.6	-14.0
		S. adj. r	"	103	109	172	243	159	135	163	117	105	-9.9	-15.3
		Trend r	"	130	144	160	170	171	161	145	130	113	-13.0	-10.1
M35.	Portland cement	Orig.	"	568	586	578	554	508	483	414	r 533	579	8.7	-6.5
		S. adj.	"	539	537	588	532	441	503	562	r 557	572	2.8	-5.1
		Trend	"	551	541	530	521	517	521	531	543	555	2.2	-6.4
M36.	Clay bricks	Orig.	million	140	141	135	138	127	104	r 79	r 108	121	12.9	-24.6
		S. adj.	"	140	126	132	131	122	117	r 113	r 108	116	7.5	-20.6
		Trend	"	139	135	130	126	122	118	115	112	110	-2.0	-28.9
M37.	Ready mixed concrete	Orig.	'000 cu m	1,274	1,386	1,289	1,285	1,254	1,011	r 952	r 1,236	1,287	4.1	-9.7
		S. adj.	"	1,286	1,265	1,265	1,205	1,143	1,155	r 1,195	r 1,257	1,262	0.4	-3.6
		Trend	"	1,252	1,244	1,228	1,208	1,193	1,190	1,200	1,215	1,233	1.5	3.7
M38.	Basic iron, spiegeleisen and sponge iron(e)	Orig.	'000 tonnes	625	657	629	640	633	639	630	611	636	4.0	0.2
		S. adj.	"	601	638	606	604	621	652	630	668	648	-3.1	0.1
		Trend	"	611	610	613	619	626	635	643	650	657	1.1	4.1
M39.	Blooms and slabs of iron or steel(e)	Orig.	"	658	693	677	690	669	664	657	618	670	8.4	6.9
		S. adj.	"	644	670	640	652	660	664	643	676	684	1.1	6.8
		Trend	"	652	652	652	653	655	659	663	668	674	0.9	3.2
M40.	Insulated wire	Orig.	tonnes	6,430	6,653	6,832	6,496	6,949	4,529	3,612	6,663	6,549	-1.7	-10.0
		S. adj.	"	5,832	6,440	6,260	5,701	6,448	5,382	6,367	6,699	5,836	-12.9	-10.2
		Trend	"	6,132	6,126	6,097	6,061	6,058	6,086	6,121	6,150	6,192	0.7	-3.9
M41.	Cars and station wagons	Orig.	number	27,217	31,101	26,800	24,523	27,826	20,843	13,172	26,787	26,050	2.8	2.4
		S. adj.	"	25,947	26,078	25,113	22,429	23,881	27,203	27,464	25,308	24,487	-3.2	5.1
		Trend	"	25,331	25,285	25,116	24,960	25,060	25,394	25,678	25,812	25,883	0.3	12.4
M42.	Vehicles for goods and materials	Orig.	"	2,291	2,498	2,049	1,999	2,159	1,476	1,003	2,134	2,430	13.9	-16.2
		S. adj.	"	2,277	2,116	1,992	1,691	1,930	1,937	2,134	2,106	2,279	8.3	-7.4
		Trend	"	2,097	2,048	1,985	1,933	1,926	1,972	2,044	2,121	2,198	3.6	-4.6

For footnotes see end of tables.

TABLE 1. PRODUCTION STATISTICS, AUSTRALIA, MARCH 1996 —continued

No.	Item	Series (a)	Unit	1995						1996			Percentage changes between latest month shown and—	
				July	Aug.	Sept.	Oct.	Nov.	Dec.	Jan.	Feb.	Mar.	prev. month	same month prev. year
M43. Telephones	Orig.	'000		116	109	135	193	144	124	72	66	91	38.0	-41.4
	S. adj.	"		n.a.	n.a.	n.a.	n.a.	n.a.	n.a.	n.a.	n.a.	n.a.	n.a.	n.a.
	Trend	"		n.a.	n.a.	n.a.	n.a.	n.a.	n.a.	n.a.	n.a.	n.a.	n.a.	n.a.
M44. Domestic refrigerators	Orig.	number		31,596	36,404	36,317	39,325	42,831	34,485	38,183	37,107	33,988	8.4	19.1
	S. adj.	"		37,440	36,215	41,454	35,117	34,715	38,792	36,748	33,655	31,144	-7.5	-9.3
	Trend	"		36,550	37,361	37,756	37,571	36,976	36,208	35,294	34,312	33,179	-3.3	0.9
M45. Water heaters	Orig.	"		54,551	57,447	56,440	54,924	59,653	40,651	21,528	44,569	50,738	13.8	-23.6
	S. adj.	"		54,763	49,093	51,712	48,736	56,298	45,587	43,058	43,962	45,924	4.5	-20.5
	Trend	"		52,928	51,893	51,183	50,619	50,032	49,971	46,272	45,039	43,921	-2.5	-22.1
M46. Domestic clothes washing machines	Orig.	"		27,643	36,352	31,625	27,083	29,485	20,873	10,757	23,619	20,595	-12.8	-24.9
	S. adj.	"		25,811	27,875	28,208	26,524	26,228	25,602	20,204	23,677	19,384	-18.1	-20.1
	Trend	"		26,395	27,106	27,285	26,799	25,759	24,432	23,066	21,787	20,701	-5.0	-15.2
M47. Electric motors	Orig.	'000		243	284	255	225	280	253	158	282	204	27.7	-38.0
	S. adj.	"		258	275	229	203	254	301	235	267	188	-29.7	-32.6
	Trend	"		253	248	247	248	250	250	248	243	237	-2.3	-6.0
M48. Electricity	Orig.	mil k Wh		15,493	14,655	13,746	13,717	13,315	13,420	13,679	13,354	14,043	5.2	1.7
	S. adj.	"		14,356	13,536	13,866	13,920	13,765	13,781	14,001	13,941	14,164	1.6	3.1
	Trend	"		13,912	13,887	13,849	13,826	13,834	13,872	13,930	13,997	14,037	0.3	1.2
M49. Gas	Orig.	terajoules		66,602	60,054	54,069	53,882	47,053	43,940	42,024	43,968	47,210	7.4	2.0
	S. adj.	"		54,935	48,366	49,331	53,646	50,402	52,709	52,246	52,756	52,724	-0.1	2.6
	Trend	"		51,691	51,238	51,026	51,176	51,571	52,005	52,392	52,743	52,847	0.2	0.8

For footnotes see end of tables.

TABLE 2. PRODUCTION STATISTICS, AUSTRALIA, DECEMBER QUARTER 1995

No.	Item	Series (a)	Unit	1993			1994			1995			Percentage changes between latest quarter shown and-	
				Dec.	Mar.	June	Sept.	Dec.	Mar.	June	Sept.	Dec.	prev. quarter	same quarter prev. year
Q1.	Men's and boys' long trousers	Orig.	'000	880	753	1,040	1,031	979	814	936	993	749	-24.6	-23.5
		S. adj.	"	897	873	921	1,004	997	946	828	968	763	-21.2	-23.5
		Trend	"	899	891	932	983	979	943	902	866	829	-4.2	-15.3
Q2.	Women's and girls' long trousers	Orig.	"	278	461	188	407	380	628	443	252	202	-19.8	-46.7
		S. adj.	"	328	403	187	405	450	545	442	252	240	-4.7	-46.6
		Trend	"	327	314	334	397	476	493	414	311	264	-15.0	-44.4
Q3.	Jeans	Orig.	"	891	709	945	941	770	641	887	979	764	-21.9	-0.7
		S. adj.	"	938	852	864	837	810	772	811	870	803	-7.6	-0.8
		Trend	"	922	879	852	830	804	797	814	830	837	0.8	4.1
Q4.	Men's and boys' shirts	Orig.	"	3,246	2,623	2,867	3,545	2,900	2,347	2,564	2,845	2,770	2.6	4.5
		S. adj.	"	2,946	3,280	3,208	2,940	2,642	2,916	2,872	2,360	2,528	7.1	-4.3
		Trend	"	3,086	3,157	3,127	2,953	2,836	2,797	2,723	2,580	2,425	-6.0	-14.5
Q5.	Women's shirts and blouses	Orig.	"	1,563	1,218	812	1,787	1,218	806	864	1,202	1,132	-5.8	-7.1
		S. adj.	"	1,419	1,506	1,092	1,326	1,107	998	1,163	891	1,029	15.5	-7.1
		Trend	"	1,357	1,341	1,304	1,189	1,131	1,084	1,025	1,006	992	-1.3	-12.3
Q6.	Undressed sawn timber(d)	Orig.	'000 cu m	847	827	905	967	916	883	925	r 946	834	-11.8	-9.0
		S. adj.	"	846	889	880	929	917	948	900	r 908	836	-8.0	-8.8
		Trend	"	851	875	896	916	928	932	914	887	859	-3.2	-7.5
Q7.	Hardwood woodchips	Orig.	'000 tonnes	1,088	1,026	1,228	1,286	1,417	1,402	1,332	1,334	1,203	-9.8	-15.1
		S. adj.	"	1,094	1,108	1,188	1,228	1,428	1,512	1,288	1,273	1,214	-4.7	-15.0
		Trend	"	1,132	1,118	1,164	1,289	1,400	1,428	1,358	1,267	1,230	-3.0	-12.1
Q8.	Alumina(d)	Orig.	"	3,154	3,172	3,209	3,235	3,203	3,203	3,299	3,348	3,297	-1.5	2.9
		S. adj.	"	3,139	3,205	3,225	3,200	3,192	3,231	3,314	3,313	3,288	-0.8	3.0
		Trend	"	3,175	3,195	3,207	3,204	3,207	3,244	3,286	3,307	3,308	0.0	3.1
Q9.	Zinc(d)	Orig.	"	79	82	81	82	78	72	81	82	85	3.7	9.0
		S. adj.	"	n.a.	n.a.	n.a.	n.a.	n.a.	n.a.	n.a.	n.a.	n.a.	n.a.	n.a.
		Trend	"	79	81	82	80	78	77	78	81	84	3.4	8.6
Q10.	Silver(d)	Orig.	tonnes	95	91	104	88	79	93	89	89	75	-15.7	-5.1
		S. adj.	"	97	98	95	88	81	99	81	89	78	-12.9	-4.5
		Trend	"	95	97	93	89	88	89	88	85	81	-3.9	-7.6
Q11.	Copper(d)	Orig.	'000 tonnes	79	81	87	87	68	71	55	80	65	-18.8	-4.4
		S. adj.	"	77	88	90	80	67	77	57	73	64	-12.9	-4.2
		Trend	"	81	86	86	81	73	68	67	66	65	-1.5	-10.2
Q12.	Lead(d)	Orig.	"	61	55	53	49	55	53	49	57	56	-1.8	1.8
		S. adj.	"	59	66	48	48	54	63	44	56	55	-1.6	1.9
		Trend	"	58	58	53	51	53	55	53	53	53	1.5	0.7
Q13.	Tin(d)	Orig.	tonnes	63	18	90	75	135	180	65	165	160	-3.0	18.5
		S. adj.	"	n.a.	n.a.	n.a.	n.a.	n.a.	n.a.	n.a.	n.a.	n.a.	n.a.	
		Trend	"	22	31	59	110	141	138	135	149	174	16.7	23.4
Q14.	Gold(d)	Orig.	"	74	75	79	78	71	74	74	75	75	0.0	5.4
		S. adj.	"	n.a.	n.a.	n.a.	n.a.	n.a.	n.a.	n.a.	n.a.	n.a.	n.a.	
		Trend	"	77	77	76	76	75	73	74	74	75	1.4	1.0

(a) Trend estimates shown may have been revised. See Explanatory Note 13. (b) Source: Australian Dairy Corporation. (c) Source: Australian Tobacco Marketing Committee, until April 1995. (d) Source: Australian Bureau of Agricultural and Resource Economics (ABARE). (e) This data item comprises production of BHP Steel only. (f) Recent movements in this series have caused some uncertainty in its trend estimates from September 1995. Although these changes may be sustained, a larger span of data is required before the final trend for this series can be determined. (g) Data in this series have not been published since August 1995. (h) Data in this series have been revised since the data were last published in the January 1996 issue.

GLOSSARY

M1	RED MEAT	includes veal, pork and buffalo
M2	CHICKEN MEAT	expressed in the dressed weight of whole birds, pieces and giblets
M3	CHEESE	includes fresh cheeses such as ricotta, cottage, cream and quark
M4	BUTTER	includes direct butter oil
M5	FLOUR OF WHEAT OR OF MESLIN	excludes self raising flour
M6	PREPARED FOODS FROM CEREALS	prepared foods obtained by the swelling or roasting of cereals or cereal products
M7	BISCUITS	sweet biscuits and other biscuits, waffles, wafers and ginger bread; excludes dog biscuits
M8	CHOCOLATE BASED CONFECTIONERY	includes confectionery containing chocolate; excludes chocolate biscuits and chocolate intended for further manufacturing
M9	OTHER CONFECTIONERY	excludes chocolate based confectionery
M10	MALT	includes malt flour
M11	BEER	includes ale and stout; excludes low alcohol beer containing less than 1.15 per cent but more than 0.5 per cent, by volume of alcohol
M12	TOBACCO AND CIGARETTES	includes those containing tobacco substitutes
M13	MAN-MADE FIBRE WOVEN FABRIC	broadwoven fabric of, or predominantly of, synthetic staple fibres and/or filament
M14	COTTON WOVEN FABRIC	broadwoven fabric of, or predominantly of, cotton; excludes gauze
M15	COTTON YARN	of, or predominantly of cotton, reported on a single yarn basis; excludes sewing thread
M16	WOOL YARN	of, or predominantly of, wool or fine animal hair
M17	WOOL WOVEN FABRIC	broadwoven woollen and worsted fabrics of, or predominantly of, wool or fine animal hair
M18	TEXTILE FLOOR COVERINGS	consisting of carpets, carpeting (excluding underfelt), floor rugs, mats and matting of, or predominantly of, textile materials
M19	FOOTWEAR	other than sports footwear; excludes thongs
M20	SPORTS FOOTWEAR	includes ski-boots
M21	NEWSPRINT	excludes directory paper, mechanical and printing paper
M22	WOOD PULP	expressed as air-dried weight
M23	UNLAMINATED PARTICLE BOARD	particle or similar boards of wood or other ligneous materials whether or not for subsequent conversions to other purposes; excludes fibreboard and fibre paperboard
M24	PAPER	other than newsprint; includes paperboard, tissue and sanitary
M25	PAPERBOARD CONTAINERS	includes corrugated paperboard and solid paperboard containers
M26	AUTOMOTIVE GASOLINE	produced by Australian refineries from imported and indigenous petroleum

M27	FUEL OIL	oils derived from the distillation of petroleum which are generally used for domestic heating or fuelling furnaces; produced by Australian refineries from imported and indigenous petroleum
M28	AVIATION TURBINE FUEL	produced by Australian refineries from imported and indigenous petroleum
M29	AUTOMOTIVE DIESEL OIL	produced by Australian refineries from imported and indigenous petroleum
M30	PLASTICS IN PRIMARY FORMS	includes liquid, paste, powder, granules, flakes, blocks, irregular shapes, lumps and similar forms
M31	RIGID PVC TUBES, PIPES AND HOSES	plastic tubes, pipes and hose of rigid polyvinyl chloride
M32	POLYETHYLENE BOTTLES UP TO TWO LITRES	plastic bottles of polyethylene, up to and including two litres
M33	PAINT	includes architectural, decorative and industrial enamels and clears, heavy duty coatings and wood stains; marine coatings are included from January 1995
M34	SUPERPHOSPHATES	expressed in terms of single super phosphate (9% P equivalent)
M35	PORTLAND CEMENT	excludes portland cement clinker and portland cement used to make blended portland cement in-house
M36	CLAY BRICKS	saleable bricks removed from kiln; excludes firebricks and bricks for other than structural purposes
M37	READY MIXED CONCRETE	excludes production used or for use within the same business
M38	BASIC IRON, SPIEGELEISEN AND SPONGE IRON	in pigs, blocks and other primary forms; includes pig iron
M39	BLOOMS AND SLABS OF IRON OR STEEL	continuous cast; includes steel in the molten state
M40	INSULATED WIRE	includes cables and other insulated electrical conductors; excludes coaxial cables and automotive low-voltage wire and ignition wiring sets
M41	CARS AND STATION WAGONS	cars and station wagons for less than 10 persons; excludes mini-buses, passenger mini-vans
M42	VEHICLES FOR GOODS AND MATERIALS	excludes off-highway trucks, fork lift trucks and semi-trailers
M43	TELEPHONES	excludes keyphones
M44	DOMESTIC REFRIGERATORS	one and two door models, includes combination refrigerator freezers
M45	HOT WATER HEATERS	includes solar
M46	DOMESTIC CLOTHES WASHING MACHINES	of a dry linen capacity not exceeding 10 kg
M47	ELECTRIC MOTORS	includes direct current generators; excludes motors and generators for motor vehicles and aircraft
M48	ELECTRICITY	excludes purchases or transfers in of electricity
M49	GAS	gas available for issue through mains, including natural gas

Q1	MEN'S AND BOYS' LONG TROUSERS	excludes jeans and waterproof trousers and trousers made as part of a complete suit
Q2	WOMEN'S AND GIRLS' LONG TROUSERS	excludes jeans and waterproof trousers
Q3	JEANS	men's, women's, boys' and girls' jeans; excludes shorts
Q4	MEN'S AND BOYS' SHIRTS	excludes sweatshirts and nightshirts
Q5	WOMEN'S SHIRTS AND BLOUSES	excludes sweatshirts and nightshirts
Q6	UNDRESSED SAWN TIMBER	expressed in terms of green off saw volumes
Q7	HARDWOOD WOODCHIPS	expressed as greenweight; excludes chips which are not sold or are used in own works
Q8	ALUMINA	aluminium oxide
Q9	ZINC	primary origin only
Q10	SILVER	refined
Q11	COPPER	primary origin only
Q12	LEAD	includes lead content of lead from primary sources
Q13	TIN	primary origin only
Q14	GOLD	from primary and secondary sources

SENSITIVITY ANALYSIS

Where seasonally adjusted series are known to be highly erratic, an analysis of how sensitive the current trend estimates are to additional data can be useful. Such analysis is referred to as 'sensitivity analysis'.

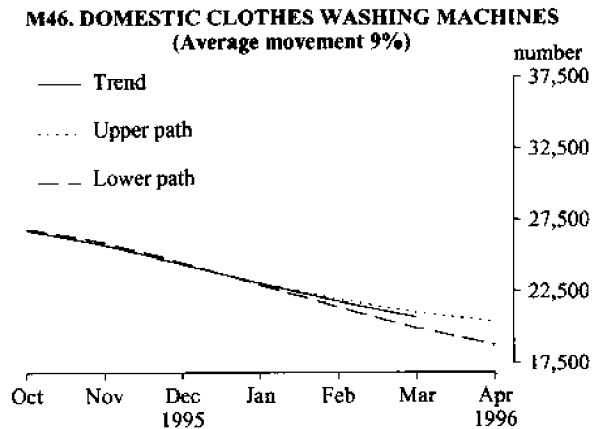
Readers should exercise care when interpreting the latest month's trend estimates because they will be revised when the next month's seasonally adjusted estimates become available. For further information, see Explanatory Notes 12 and 13.

The graph below presents the effect of two possible scenarios on the current and previous trend estimates;

Upper path The April 1996 seasonally adjusted estimate of the production of domestic clothes washing machines is higher than the March 1996 seasonally adjusted estimate by 9%.

Lower path The April 1996 seasonally adjusted estimate of the production of domestic clothes washing machines is lower than the March 1996 seasonally adjusted estimate by 9%.

The percentage change of 9% was chosen because the average monthly absolute percentage change for this series since January 1965 has been 9%.



EXPLANATORY NOTES

Introduction

1. This publication presents monthly and quarterly estimates of production of selected major manufacturing indicators for Australia.

Scope and coverage

2. Data presented in this publication are collected from a number of different sources. The prime source is the ABS surveys of manufacturing production. Data are also obtained from surveys undertaken by the Australian Bureau of Agricultural and Resource Economics (ABARE), the Australian Dairy Corporation (ADC), the Australian Tobacco Marketing Committee (until April 1995) and from ABS agriculture collections. Scope and coverage varies slightly depending on the source of the information.

3. Where production statistics are collected by the ABS manufacturing production surveys, they are not collected from single establishment manufacturing businesses with less than four persons employed nor from establishments predominantly engaged in non-manufacturing activities but which may carry out some manufacturing in a minor way. However, in general, the contribution of these small producers to statistical aggregates is only marginal and data contained in this publication provide reliable information for the evaluation of movements in commodity production.

4. The statistics on meat production include data collected from abattoirs and other major slaughtering establishments and include estimates of animals slaughtered on farms and by country butchers and other small slaughtering establishments for human consumption.

5. The statistics on chicken meat have been collected from commercial poultry slaughtering establishments. Producers in Tasmania, the Northern Territory and the Australian Capital Territory and the very small producers are excluded from the collection.

6. Data on the production of fuels, sawn timber and quarterly estimates of base metal production are obtained from the Australian Bureau of Agricultural and Resource Economics publications *Mineral Statistics* and *Forest Products Statistics*.

7. Data on the production of cheese and butter are obtained from the Australian Dairy Corporation publication *Dairystats*. Data on tobacco and cigarettes produced were obtained from the Australian Tobacco Marketing Committee until April 1995.

Comparability with other estimates

8. The ABS publishes quarterly estimates of constant price manufacturing production in the publication *Quarterly Indexes of Industrial Production, Australia* (8125.0). These estimates are shown as index numbers and are derived mainly from estimates of manufacturers' sales and stocks.

9. The production statistics collected monthly and quarterly referred to in paragraph 1 account, in total, for less than half of the output of the manufacturing sector. For information on general trends in the manufacturing sector, refer to the publication referred to in paragraph 8.

Seasonally adjusted and trend estimates

10. Seasonally adjusted statistics are shown for most of the data items contained in this publication. In the seasonal adjustment, account has been taken not only of normal seasonal factors, but also where appropriate, of 'working day' effects (arising from the varying numbers of Sundays, Mondays, Tuesdays, etc. in the month) and the influence of Easter and Australia Day which may, in successive years, affect figures for different months. Details of the methods used in seasonally adjusting these series are available on request.

11. Seasonal adjustment procedures do not aim to remove the irregular or non-seasonal influences which may be present in any particular month, such as the effect of strikes, holiday shutdowns or other factors which vary with the prevailing demand for products. Irregular influences that are highly volatile can make it difficult to interpret the movement of the series even after seasonal adjustment.

12. The smoothing of seasonally adjusted series to create trend estimates is a means of reducing the impact of the irregular component of the series. The trend estimates have been derived by applying a 13-term Henderson weighted moving average to the seasonally adjusted series.

13. While this smoothing technique enables estimates of trend to be produced for the latest month, it does result in revisions to the estimates for the most recent months as data for subsequent months become available. Generally, subsequent revisions become smaller and after 3 months have little impact on the series. There will also be revisions as a result of revisions to the original estimates and annual reviews of seasonal and 'working day' factors.

14. Users may wish to refer to the ABS Information Paper *A Guide to Interpreting Time Series - Monitoring 'Trends', an overview* (1348.0) for more detailed information on smoothing of seasonally adjusted time series data.

Related publications and services

15. Other ABS publications and services which may be of interest are:

International Trade, Australia: FASTTRACCS Service - Hardcopy Reports (5461.0)

Stocks, Selected Industry Sales and Expected Sales, Australia (5629.0) issued quarterly

Livestock Products, Australia (7215.0) issued monthly

Quarterly Indexes of Industrial Production, Australia (8125.0)

Manufacturing Industry, Australia, Preliminary (8201.0) issued annually

Manufacturing Industry, Australia (8221.0) issued annually

Manufacturing Production, Australia: Principal Commodities Produced, 1989-90 (8365.0)

The Australian Mining Industry, Australia (8414.0) issued annually

Additional manufacturing production data are collected by the ABS through user funded surveys and are available to users as a special data service. These series are:

- domestic refrigerators
- domestic deep-freezers
- water heaters
- clothes drying machines
- domestic cooking stoves, ovens and ranges
- space heaters
- mowers
- air conditioners
- audio cassette tapes
- audio compact discs
- liquid supply or production meters
- brass bars, rods and sections
- strip for retreading rubber tyres
- electricity
- gas
- semi-trailers
- mineral waters and aerated waters
- starches, wheat gluten and glucose
- beer
- ham and bacon and canned meat
- ready mixed concrete
- concrete blocks, bricks and pavers
- roof tiles
- clay bricks
- Portland cement
- mattresses and mattress supports
- knitted underwear
- foundation garments

A more detailed breakdown of most published series is also available as a special data service.

For further information, please call Jeffrey Middleton on (02) 268 4541.

16. Current publications produced by the ABS are listed in the *Catalogue of Publications and Products, Australia* (1101.0). The ABS also issues, on Tuesdays and Fridays, a *Release Advice* (1105.0) which lists publications to be released in the next few days. The Catalogue and Publications Advice are available from any ABS office.

Symbols and other usages

- n.a. not available
- n.p. not publishable
- n.y.a. not yet available
- r figure or series revised since previous issue

For more information . . .

The ABS publishes a wide range of statistics and other information on Australia's economic and social conditions. Details of what is available in various publications and other products can be found in the ABS Catalogue of Publications and Products available from all ABS Offices.

ABS Products and Services

Many standard products are available from ABS bookshops located in each State and Territory. In addition to these products, information tailored to the needs of clients can be obtained on a wide range of media by contacting your nearest ABS Office. The ABS also provides a Subscription Service for standard products and some tailored information services.

National Dial-a-Statistic Line

0055 86 400

Steadycom P/L: premium rate 25c/21.4 secs.

This number gives 24-hour access, 365 days a year, for a range of important economic statistics including the CPI.

Internet

<http://www.statistics.gov.au>

A wide range of ABS information is available via the Internet, with basic statistics available for each State, Territory and Australia. We also have Key National Indicators, ABS product release details and other information of general interest.

Sales and Inquiries

Keylink STAT.INFO/ABS
X.400 (C:Australia,PUB:Telememo,O:ABS,FN:STAT,SN:INFO)
Internet stat.info@abs.telememo.au

National Mail Order Service (06) 252 5249
Subscription Service 1800 02 0608

Information Inquiries Bookshop Sales

SYDNEY	(02)	268 4611	268 4620
MELBOURNE	(03)	9615 7755	9615 7755
BRISBANE	(07)	3222 6351	3222 6350
PERTH	(09)	360 5140	360 5307
ADELAIDE	(08)	237 7100	237 7582
HOBART	(002)	205 800	205 800
CANBERRA	(06)	252 6627	207 0326
DARWIN	(089)	432 111	432 111



Client Services, ABS, PO Box 10, Belconnen ACT 2616

